



# Study Of Setting-Out And Foundation Works For Residential Buildings

Prof. Kiran Sharikar<sup>1</sup>, Ghule Rohit<sup>2</sup>

<sup>1</sup>Faculty Civil Engineering Vidya Prasarini Sabha's College of Engineering and  
Technology ,Lonavala

<sup>2</sup>Student Civil Engineering Vidya Prasarini Sabha's College of Engineering and  
Technology ,Lonavala

## 1. Abstract

Setting-out and foundation works are the fundamental precursors to any successful building project, yet they are often prone to errors that can compromise long-term structural integrity. Setting-out involves transferring architectural and structural designs from paper onto the physical ground with high precision. This study investigates the methodologies, tools, and challenges associated with these processes in the context of residential construction.

The project evaluates common setting-out techniques, such as the **3-4-5 triangle method** for ensuring right angles and the **centerline method** for wall marking. It further explores the selection of foundation types—ranging from shallow footings for low-rise homes to deep piles for multi-story buildings—based on soil bearing capacity and environmental factors. Through a series of site observations and comparative analyses, the research identifies critical failure points, including inaccurate baselines, inadequate soil testing, and poor drainage planning.

The findings highlight that a systematic approach—integrating modern surveying tools like total stations with traditional profile boards—significantly reduces the risk of structural misalignment and costly rework. Ultimately, this project provides a comprehensive guide for engineers and contractors to enhance accuracy and stability during the initial phases of residential building construction.

## 2. Introduction

The successful execution of a residential building project is fundamentally dependent on the accuracy and quality maintained during its initial construction stages, particularly line-out and foundation work. These preliminary operations establish the structural framework of the building and play a decisive role in ensuring its stability, safety, and long-term durability.

Line-out work, also known as setting out, involves the precise transfer of the building layout from design drawings onto the ground. This process serves as the reference for all subsequent construction activities, ensuring that structural elements such as walls, columns, and footings are positioned in exact accordance with the approved plans. Any inaccuracy at this stage, even if minimal, can propagate through the construction process, leading to misalignment, structural inefficiencies, increased material consumption, and potential safety risks.

Foundation work constitutes the construction of the substructure that supports and transfers the entire load of the building safely to the underlying soil. The design and selection of an appropriate foundation system are governed by several critical factors, including soil bearing capacity, magnitude and distribution of structural loads, groundwater conditions, and environmental influences. A properly designed and well-executed foundation ensures uniform load distribution, minimizes differential settlement, and significantly enhances the overall performance and service life of the structure.

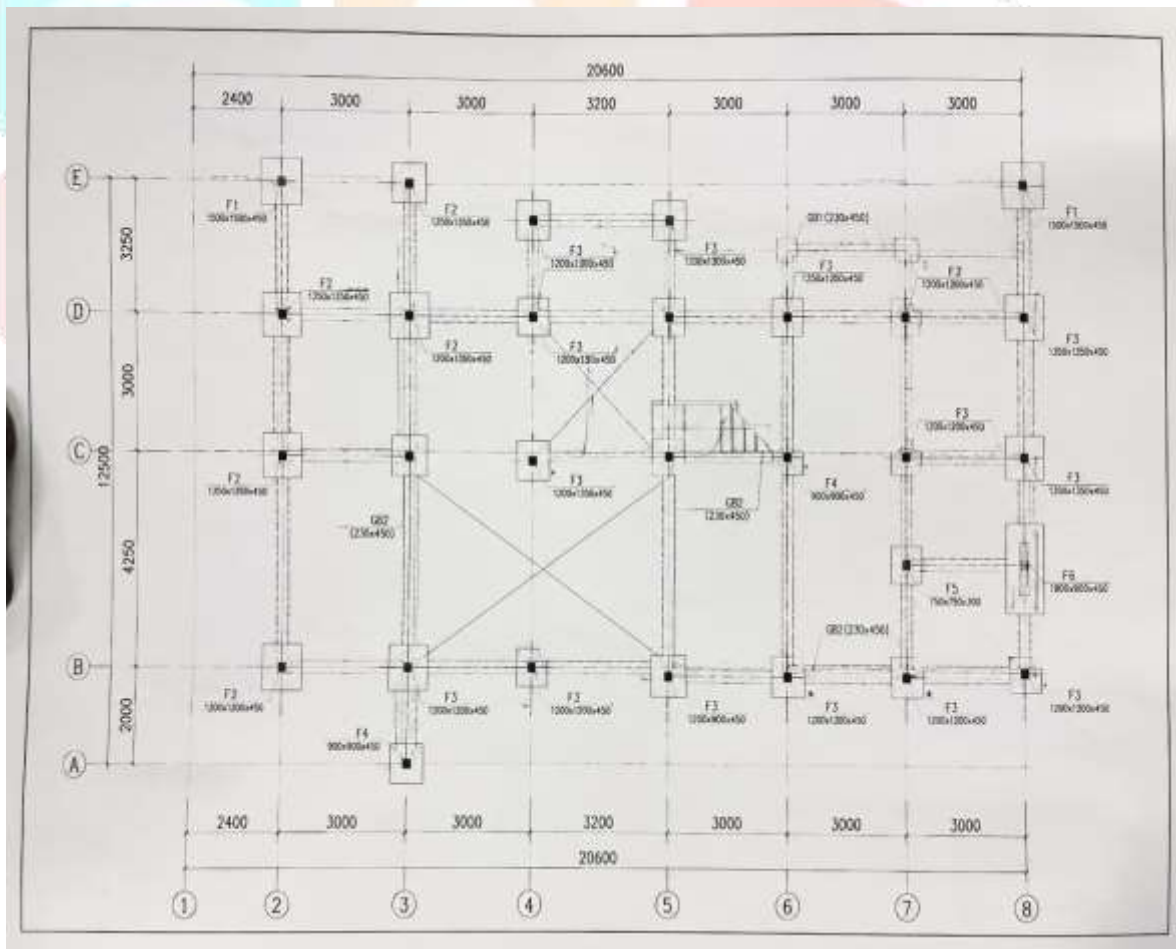
Given their critical importance, both line-out and foundation work demand a high degree of precision, technical expertise, and adherence to established construction practices and standards. This study aims to provide a comprehensive understanding of the techniques, tools, and procedures involved in these stages of residential construction, highlighting their impact on structural accuracy, efficiency, and reliability.

### 3. Methodology

The methodology adopted for this study includes both theoretical understanding and practical observation. The following steps were followed:

#### 3.1 Site Selection and Study

- A residential construction site was selected for observation.
- Site conditions such as soil type, terrain, and surroundings were analyzed.



## 3.2 Study of Line-Out Work

- Reviewed building drawings (architectural and structural plans).
- Observed the process of marking reference points and baseline.
- Tools used:
  - Measuring tape
  - Leveling instrument (auto level/dumpy level)
  - Pegs, ropes, and lime powder

### 1. Establishment of a reference point (benchmark)

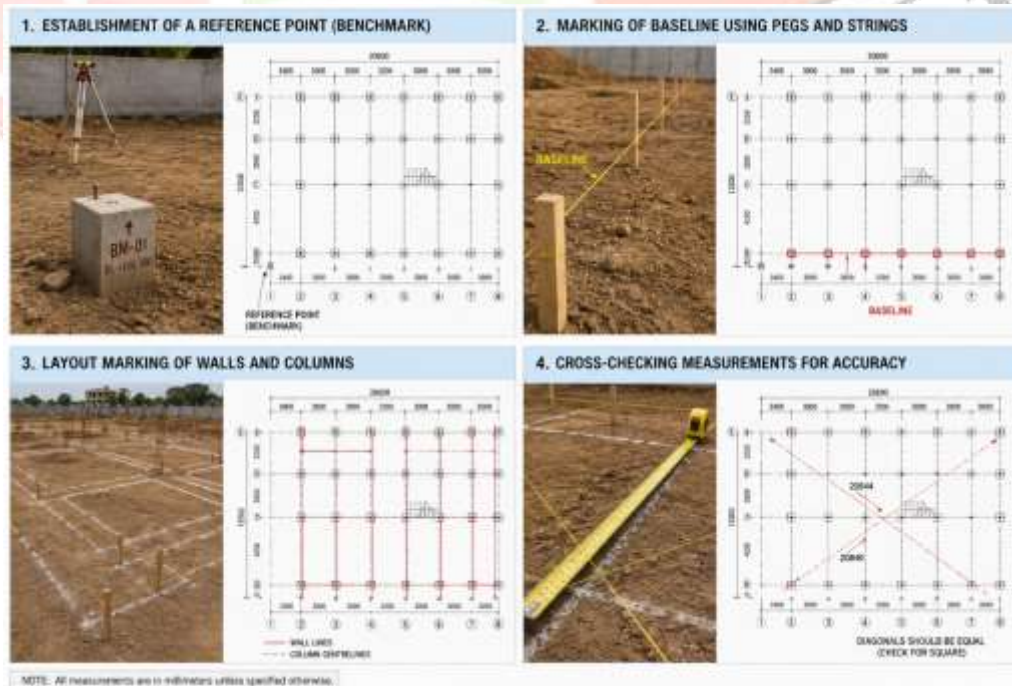
Establishing a reference point in line out work (setting out/construction layout) is the foundational step of defining a fixed, known location on a site from which all subsequent measurements, alignments, and elevations are calculated. It provides a stationary origin to accurately transfer structural, architectural, or civil engineering plans from drawings onto the ground, ensuring the project is built in the correct position and at the correct height.

### 2. Marking of baseline using pegs and strings.

Marking a baseline using pegs and strings is the foundational step in **lineout work** (or setting out), ensuring a building is correctly positioned, aligned, and oriented on a site according to architectural plans. This method transfers the building's outline from paper to the ground, serving as the starting reference for all subsequent measurements.

### 3. Layout marking of walls and columns.

Layout marking (or lineout work) is the crucial first step in construction that transfers the column centerlines, wall positions, and foundation boundaries from the structural drawing to the actual ground. Proper layout ensures the building is positioned accurately, oriented correctly, and structurally sound, preventing costly errors, such as misaligned columns or improper footing sizes.



### 4. Cross-checking measurements for accuracy.

Cross-checking measurements in lineout work (often called "setting out" in construction) is the process of verifying that the established layout lines for a project are accurate, square, and true to the blueprints. It involves creating redundant measurements—checking the same distance or angle using multiple methods or points—to catch errors before permanent structures are built.



### 3.3 Study of Foundation Work

- Observed excavation process according to layout markings.
- Studied types of foundations used (mainly shallow foundations for residential buildings).
- Examined reinforcement placement and concreting process.

#### Steps in Foundation Work

##### 1. Excavation of soil to required depth.

Excavation of soil for foundations involves cutting and removing earth to a designed depth and width to reach stable, load-bearing strata. It prepares the site by creating trenches or pits for footing installation, ensuring structural stability, proper drainage, and resistance to soil movement (e.g., frost or shrinkage)

##### 2. Preparation of base (compaction and leveling)

Preparation of the base in foundation work—often referred to as **dressing, leveling, and compaction**—is the crucial first step after excavation that ensures the stability, load-bearing capacity, and longevity of a structure. It involves transforming the loose soil at the bottom of a trench into a dense, solid, and flat surface to prevent future settling, structural cracks, or foundation failure

**3. Laying of PCC (Plain Cement Concrete)** Laying Plain Cement Concrete (PCC) in foundations provides a level, rigid, and impermeable base, usually thick, made of cement, sand, and aggregate (often 1:2:4 or 1:4:8 ratio). It prevents soil contact with Reinforcement Concrete (RCC), ensuring structural stability and protecting steel from moisture and corrosion

##### 4. Placement of reinforcement (steel bars)

Proper placement of reinforcement (steel bars or rebar) in foundation work is critical for structural integrity, ensuring the foundation can withstand tensile forces, prevent cracking, and support the structural loads. It involves creating a rebar cage that is securely tied, elevated off the ground, and positioned precisely according to engineering drawings

##### 5. Formwork installation.

Formwork installation in foundation work involves creating temporary molds—typically timber, plywood, or steel—to hold wet concrete in its required shape and position until it cures. It requires precise marking, robust bracing for pressure resistance, and watertight sealing to prevent grout leakage, ensuring structural integrity



## 6. Concreting of footing.



Concreting of footing involves pouring reinforced concrete into excavated trenches to create a stable, load-bearing base below the frost line. It involves site preparation, steel reinforcement (rebar) placement, continuous pouring, compaction to remove air voids, and curing for at least 7 days to ensure structural strength and prevent settling

## 7. Curing process to gain strength.

Curing is the critical construction process of maintaining adequate moisture, temperature, and time conditions in freshly placed concrete to ensure the **hydration of cement**—the chemical reaction that allows concrete to harden, gain strength, and achieve durability. In foundation work, proper curing is essential because the concrete does not "dry" to gain strength, but rather "hydrates"

## 4. Results and Discussion

### Findings

The study revealed the following key findings related to line-out work and foundation construction:

#### 4.1 Line-Out Work

- Accuracy in measurement is of utmost importance, as even minor errors can result in significant misalignment of structural elements.
- The proper use of surveying instruments such as measuring tapes, levels, and theodolites ensures higher precision in layout marking.
- Regular cross-checking of dimensions and alignment helps in minimizing errors and maintaining consistency with design drawings.

#### 4.2 Foundation Work

- Soil conditions play a crucial role in determining the type and design of the foundation system.
- Proper curing of concrete is essential to achieve the desired strength, durability, and long-term performance of the foundation.
- Reinforcement placement must strictly adhere to design specifications to ensure structural stability

and load-bearing capacity.

### 4.3 Common Challenges

- Human errors during measurement and layout marking
- Uneven ground surface affecting accuracy of line-out
- Water seepage encountered during excavation work
- Low or variable soil bearing capacity impacting foundation design

## 5. Conclusion

This study concludes that line-out and foundation work constitute the most critical phases in residential building construction, as they establish the basis for the entire structural system. Accurate line-out ensures that the building is positioned and aligned precisely in accordance with the design specifications, while a properly designed and executed foundation provides the necessary strength, stability, and safety for the structure.

The findings emphasize that effective planning, the use of appropriate tools and techniques, and strict adherence to established engineering standards are essential for successful execution. Any negligence or inaccuracy during these initial stages can lead to structural defects, increased construction costs, and potential safety hazards.

Furthermore, maintaining precision in measurements, following standardized procedures, and implementing rigorous quality control practices throughout the process are crucial to achieving reliable outcomes.

Overall, this study reinforces the significance of line-out and foundation work as fundamental components in construction, highlighting their direct impact on the durability, performance, and long-term reliability of residential structures.

## 6. References

1. "Basics of Civil Engineering" – S. S. Bhavikatti
2. "Basic Civil Engineering" – S. Ramamrutham
3. "Elements of Civil Engineering" – M.N. Shesha Prakash & Ganesh B
4. "Principles of Foundation Engineering" – B. M. Das
5. "Foundation Engineering" – P. C. Varghese
6. "Theory and Practice of Foundation Design" – N. Som
7. "Soil Mechanics and Foundation Engineering" – B. C. Punmia
8. "Basic and Applied Soil Mechanics" – Gopal Ranjan & A. S. Rao
9. "Civil Engineering Drawing and House Planning" – B. P. Verma
10. S. S. Bhavikatti – Basics of Civil Engineering
11. B. M. Das – Principles of Foundation Engineering
12. P. C. Varghese – Foundation Engineering
13. B. C. Punmia – Soil Mechanics and Foundation Engineering
14. B. P. Verma – Civil Engineering Drawing and House Planning