



Study of Line-out and Foundation work of Residential Building

Prof. SayliDharme¹, Manop Biswas²

1 Faculty Civil Engineering Vidya Prasarini Sabha's College of Engineering and Technology, Lonavala

2 Student Civil Engineering Vidya Prasarini Sabha's College of Engineering and Technology, Lonavala

1. Abstract

The construction of a residential building involves several stages, among which line-out (layout) and foundation work are the most crucial. This project presents a detailed study of these initial construction activities, emphasizing their importance in ensuring structural accuracy, safety, and durability.

Line-out work involves transferring the architectural and structural drawings onto the ground surface, marking the exact positions of columns, walls, and other elements. Accuracy in this stage ensures proper alignment and minimizes construction errors. The foundation work follows, serving as the base of the structure and transferring the load safely to the soil. The study includes different types of foundations, construction procedures, soil considerations, and safety practices.

This project highlights practical methodologies used on-site, identifies common challenges, and suggests solutions to improve efficiency and precision. The findings confirm that proper execution of line-out and foundation work significantly influences the overall performance and longevity of residential buildings.

2. Introduction

The success of any residential building project largely depends on the accuracy and quality of its initial stages, namely line-out and foundation work. These processes form the backbone of construction and determine the strength and stability of the structure.

Line-out work is the process of marking the layout of the building on the ground according to approved drawings. It ensures that all structural elements are placed correctly as per design specifications. Even minor errors in this stage can lead to major structural issues.

Foundation work involves constructing the base that supports the entire building. The type and design of the foundation depend on factors such as soil condition, load of the structure, and environmental conditions. A strong foundation ensures load distribution, prevents settlement, and increases the building's lifespan.

This study aims to understand the techniques, tools, and procedures involved in both line-out and foundation work in residential construction.

3. Methodology

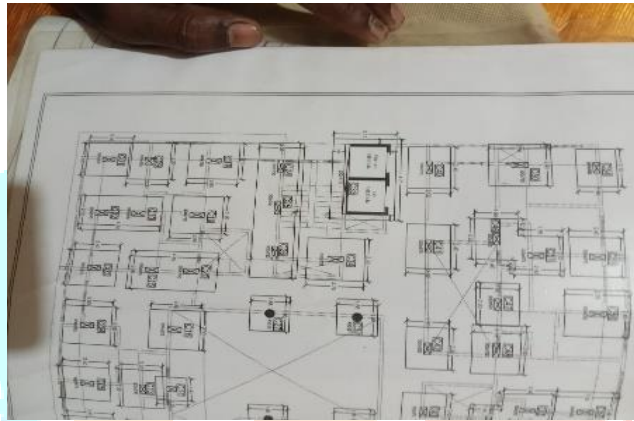
The methodology adopted for this study includes both theoretical understanding and practical observation. The following steps were followed:

3.1 Site Selection and Study

- A residential construction site was selected for observation.
- Site conditions such as soil type, terrain, and surroundings were analyzed.

3.2 Study of Line-Out Work

- Reviewed building drawings (architectural and structural plans).



- Observed the process of marking reference points and baseline.
- Tools used:
 - Measuring tape
 - Leveling instrument (auto level/dumpy level)
 - Pegs, ropes, and lime

Steps in Line-Out Work

1. Establishment of a reference point (benchmark).

Establishing a reference point in line out work (setting out/construction layout) is the foundational step of defining a fixed, known location on a site from which all subsequent measurements, alignments, and elevations are calculated. It provides a stationary origin to accurately transfer structural, architectural, or civil engineering plans from drawings onto the ground, ensuring the project is built in the correct position and at the correct height.

2. Marking of baseline using pegs and strings.

Marking a baseline using pegs and strings is the foundational step in **lineout work** (or setting out), ensuring a building is correctly positioned, aligned, and oriented on a site according to architectural plans. This method transfers the building's outline from paper to the ground, serving as the starting reference for all subsequent measurements.

3. Layout marking of walls and columns.

Layout marking (or lineout work) is the crucial first step in construction that transfers the column centerlines, wall positions, and foundation boundaries from the structural drawing to the actual ground. Proper layout ensures the building is positioned accurately, oriented correctly, and structurally sound, preventing costly errors, such as misaligned columns or improper footing sizes.

4. Cross-checking measurements for accuracy.

Cross-checking measurements in lineout work (often called "setting out" in construction) is the process of verifying that the established layout lines for a project are accurate, square, and true to the blueprints. It involves creating redundant measurements—checking the same distance or angle using multiple methods or points—to catch errors before permanent structures are built.



3.3 Study of Foundation Work

- Observed excavation process according to layout markings.
- Studied types of foundations used (mainly shallow foundations for residential buildings).
- Examined reinforcement placement and concreting process.

Steps in Foundation Work

1. Excavation of soil to required depth.

Excavation of soil for foundations involves cutting and removing earth to a designed depth and width to reach stable, load-bearing strata. It prepares the site by creating trenches or pits for footing installation, ensuring structural stability, proper drainage, and resistance to soil movement (e.g., frost or shrinkage)

2. Preparation of base (compaction and leveling).

Preparation of the base in foundation work—often referred to as **dressing, leveling, and compaction**—is the crucial first step after excavation that ensures the stability, load-bearing capacity, and longevity of a structure. It involves transforming the loose soil at the bottom of a trench into a dense, solid, and flat surface to prevent future settling, structural cracks, or foundation failure

3. Laying of PCC (Plain Cement Concrete).

Laying Plain Cement Concrete (PCC) in foundations provides a level, rigid, and impermeable base, usually thick, made of cement, sand, and aggregate (often 1:2:4 or 1:4:8 ratio). It prevents soil contact with Reinforcement Concrete (RCC), ensuring structural stability and protecting steel from moisture and corrosion

4. Placement of reinforcement (steel bars).

Proper placement of reinforcement (steel bars or rebar) in foundation work is critical for structural integrity, ensuring the foundation can withstand tensile forces, prevent cracking, and support the structural loads. It involves creating a rebar cage that is securely tied, elevated off the ground, and positioned precisely according to engineering drawings

5. Formwork installation.

Formwork installation in foundation work involves creating temporary molds—typically timber, plywood, or steel—to hold wet concrete in its required shape and position until it cures. It requires precise marking, robust bracing for pressure resistance, and watertight sealing to prevent grout leakage, ensuring structural integrity



6. Concreting of footing.



Concreting of footing involves pouring reinforced concrete into excavated trenches to create a stable, load-bearing base below the frost line. It involves site preparation, steel reinforcement (rebar) placement, continuous pouring, compaction to remove air voids, and curing for at least 7 days to ensure structural strength and prevent settling

7. Curing process to gain strength.

Curing is the critical construction process of maintaining adequate moisture, temperature, and time conditions in freshly placed concrete to ensure the **hydration of cement**—the chemical reaction that allows concrete to harden, gain strength, and achieve durability. In foundation work, proper curing is essential because the concrete does not "dry" to gain strength, but rather "hydrates"

4. Results and Discussion

The study revealed the following key findings:

4.1 Line-Out Work

- Accuracy in measurement is critical; small errors can lead to misalignment.
- Proper use of instruments ensures precision.
- Regular cross-checking reduces mistakes.

4.2 Foundation Work

- Soil condition plays a major role in selecting foundation type.
- Proper curing of concrete improves strength and durability.
- Reinforcement placement must follow design specifications strictly.

4.3 Common Challenges

- Human errors in measurement.
- Uneven ground surface.
- Water seepage during excavation.
- Poor soil bearing capacity.

5. Conclusion

The study concludes that line-out and foundation work are the most critical stages in residential building construction. Accurate line-out ensures that the building is constructed as per the design, while a strong and well-designed foundation guarantees structural stability and safety.

Proper planning, use of appropriate tools, and adherence to engineering standards are essential for successful execution. Any negligence in these stages can lead to structural defects, increased costs, and safety risks.

Therefore, it is necessary to maintain precision, follow standard procedures, and ensure quality control throughout the process. This study reinforces the importance of these foundational steps in achieving durable and reliable residential construction.

6. References

1. "Basics of Civil Engineering" – S. S. Bhavikatti
2. "Basic Civil Engineering" – S. Ramamrutham
3. "Elements of Civil Engineering" – M.N. Shesha Prakash & Ganesh B
4. "Principles of Foundation Engineering" – B. M. Das
5. "Foundation Engineering" – P. C. Varghese
6. "Theory and Practice of Foundation Design" – N. Som
7. "Soil Mechanics and Foundation Engineering" – B. C. Punmia
8. "Basic and Applied Soil Mechanics" – Gopal Ranjan & A. S. Rao
9. "Civil Engineering Drawing and House Planning" – B. P. Verma
10. S. S. Bhavikatti – Basics of Civil Engineering
11. B. M. Das – Principles of Foundation Engineering
12. P. C. Varghese – Foundation Engineering
13. B. C. Punmia – Soil Mechanics and Foundation Engineering
14. B. P. Verma – Civil Engineering Drawing and House Planning