



IMPACT OF SOCIAL MEDIA ON HUMAN BEHAVIOR IN THE AGE OF ARTIFICIAL INTELLIGENCE

Aishwarya Jadhav

MSc Computer Applications (CA)

H.V Desai College, Pune, India

Abstract -

In the modern digital era, social media platforms integrated with Artificial Intelligence (AI) have become an important part of everyday life. These platforms influence communication, emotions, and decision-making patterns. This study examines how social media affects human behavior, particularly attention span, emotional responses, and productivity.

The findings indicate that while social media improves connectivity, excessive usage may lead to behavioral changes and reduced efficiency. The study emphasizes the importance of balanced digital usage.

Index Terms - Social Media, Human Behavior, Artificial Intelligence, Digital Interaction.

I. INTRODUCTION

Over the past decade, social media has significantly transformed the way individuals communicate, share information, and interact with each other. Platforms such as Instagram, Facebook, and YouTube have become a central part of everyday routines, especially among young users. These platforms are no longer limited to communication; they now play a key role in shaping opinions, behaviors, and lifestyle choices.

One of the major reasons behind this transformation is the integration of Artificial Intelligence. AI algorithms analyze user activity, preferences, and engagement patterns to provide personalized content. This increases user involvement and keeps individuals engaged for longer periods of time.

However, this continuous exposure to digital content has a direct impact on human behavior. It influences how people think, react emotionally, and make decisions in their daily lives. As a result, understanding the behavioral impact of social media has become an important area of study.

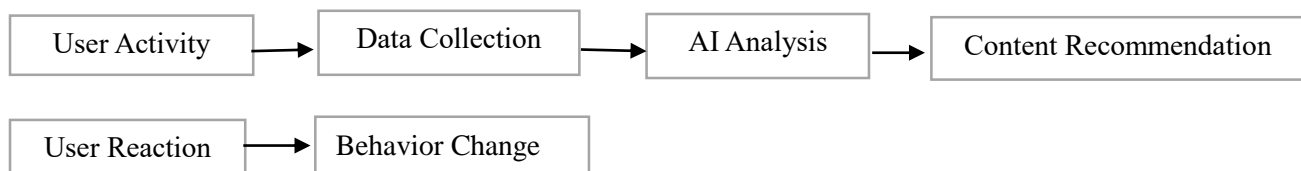


Figure 1: AI Working Process of AI in Social Media

II. LITERATURE REVIEW

Several researchers have studied the effects of social media on human behavior and identified both positive and negative outcomes.

Kumar (2021) focused on the role of Artificial Intelligence and found that AI-driven systems influence user behavior by providing personalized recommendations based on previous activity [1]. Sharma (2019) observed that excessive use of social media can reduce attention span and lead to increased stress levels among users [2]. The study highlighted that constant exposure to digital content affects concentration and mental well-being. Gupta (2022) further supported this idea by stating that such recommendations can shape decision-making and limit exposure to diverse viewpoints [3]. On the positive side, Kaplan and Haenlein (2010) emphasized that social media improves communication, knowledge sharing, and global connectivity [6]. It allows users to access information quickly and interact with people across the world. Similarly, Andreassen (2015) explained that repeated engagement with social networking platforms can result in addictive behavior patterns, where users feel the need to frequently check updates [7]. However, most studies agree that uncontrolled and excessive usage can lead to negative behavioral consequences.

III. RESEARCH METHODOLOGY

This study adopts a qualitative and descriptive research approach to understand the impact of social media on human behavior. The main focus of the study is on young users, particularly students, as they are the most active users of social media platforms and are more likely to experience behavioral changes.

The research is primarily based on secondary data collected from academic journals, research papers, and reliable online sources. These sources provide insights into how social media and Artificial Intelligence influence user behavior in different ways. In addition to this, general observation of user activities and patterns has also been considered to better understand real-life behavioral changes.

The study examines key factors such as social media usage, screen time, and AI-based content recommendations. These factors are considered important because they directly influence how users interact with digital platforms and how their behavior changes over time. For example, increased screen time may lead to reduced attention span, while personalized content recommendations may influence decision-making and preferences.

A simple analytical approach is used to interpret the collected information and identify common behavioral trends. The analysis focuses on understanding patterns rather than using complex statistical tools. This makes the study more practical and relevant to real-world situations.

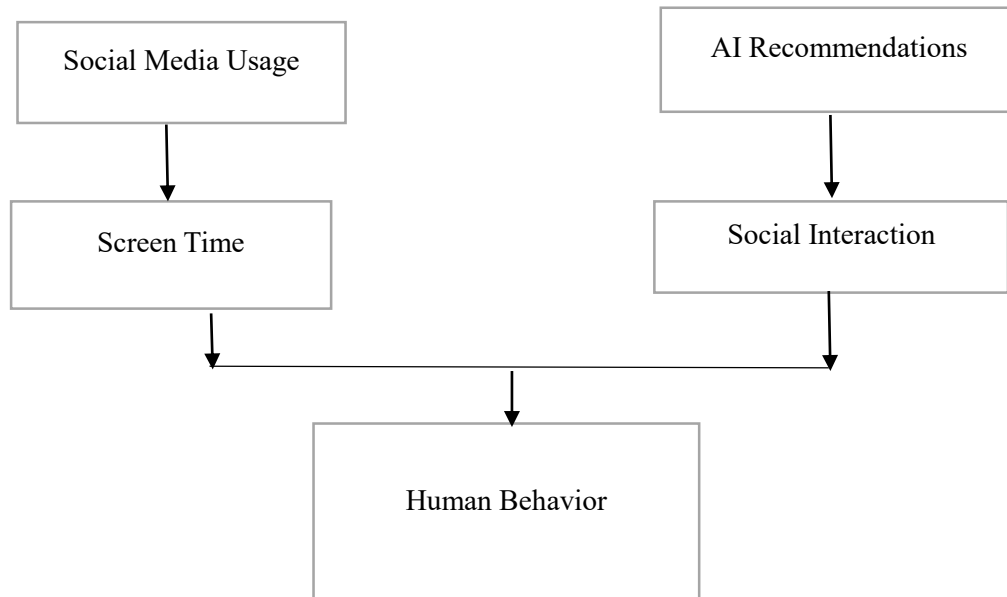


Figure 2: Theoretical Framework of the Study

IV. RESULTS

The following table presents the observed behavioral changes among social media users based on the analysis of available data and general user patterns.

Table 1: Observed Changes in Human Behavior

Behavior Aspect	Type of Impact	Observation
Attention Span	Negative	Decreased
Social Interaction	Mixed	More online than offline
Emotional Stability	Negative	Mood changes and comparison
Decision Making	Influenced	Based on trends
Productivity	Negative	Slightly reduced

The results of the study indicate that social media has a noticeable impact on multiple aspects of human behavior. One of the most significant changes observed is the reduction in attention span. Due to continuous exposure to short-form and fast-moving content, users tend to lose focus quickly and find it difficult to concentrate on longer tasks.

In terms of social interaction, there has been a clear shift from offline to online communication. While social media allows people to stay connected easily, it has reduced the frequency of face-to-face interactions. This creates a mixed impact, as it improves connectivity but affects real-life communication skills.

Emotional stability is also influenced by social media usage. Users often compare themselves with others based on the content they see online, which may lead to mood swings, dissatisfaction, or low self-confidence. This indicates a negative emotional impact, especially among young users.

Decision-making behavior is also affected, as users tend to follow trends, viral content, and online opinions. This shows that social media plays a role in shaping user preferences and choices.

Overall, the results suggest that while social media offers certain advantages, its excessive use can lead to noticeable behavioral changes that need to be managed carefully.

V. DISCUSSION

The findings of this study clearly show that social media plays a significant role in shaping human behavior. Artificial Intelligence further strengthens this impact by continuously analyzing user data and delivering personalized content that keeps users engaged.

While social media provides several advantages such as improved communication, awareness, and access to information, excessive usage can lead to negative outcomes. Users may experience reduced productivity, increased stress, and dependency on digital platforms.

Another important observation is that users often develop habits based on the content they consume. This can influence their thoughts, preferences, and daily activities. Therefore, the impact of social media is not entirely negative or positive; it depends on how individuals use these platforms.

VI. CONCLUSION

This study concludes that social media, along with Artificial Intelligence, has a significant influence on human behavior in the modern digital era. It has become an essential part of daily life, affecting how individuals communicate, think, and make decisions.

The study highlights that while social media provides benefits such as improved connectivity, information sharing, and awareness, excessive usage can lead to negative outcomes. These include reduced attention span, emotional imbalance, and decreased productivity. The influence of AI-based recommendations further strengthens user engagement, making users spend more time on these platforms.

Therefore, it is important for individuals to use social media in a balanced and mindful way. Proper awareness and self-control can help users take advantage of its benefits while minimizing its negative effects.

VII. LIMITATIONS

This study has certain limitations that should be considered while interpreting the results. Firstly, the research is based on secondary data collected from existing studies and online sources, which may not fully represent all user groups.

Secondly, the study mainly focuses on young users, particularly students, and may not reflect the behavior of other age groups. Additionally, no primary data collection methods such as surveys or interviews were conducted, which could have provided more detailed and accurate insights.

Lastly, the study does not use advanced statistical tools, as the focus is on general behavioral patterns rather than numerical analysis.

VIII. FUTURE SCOPE

There is significant scope for further research in this area. Future studies can include primary data collection methods such as surveys, interviews, or questionnaires to obtain more accurate and real-time insights into user behavior.

Researchers can also explore the long-term psychological effects of social media usage, especially among different age groups. Another important area is the development of strategies and tools to reduce excessive usage and promote digital well-being.

Additionally, future research can focus on the role of awareness programs and digital education in helping users develop healthy social media habits.

ACKNOWLEDGMENT

I would like to express my sincere gratitude to my college and faculty members for their continuous support and guidance throughout this research work. Their valuable suggestions and encouragement helped in improving the quality of this study.

REFERENCES

- [1] Kumar, R. (2021). Impact of Artificial Intelligence on Social Media.
- [2] Sharma, P. (2019). Psychological Effects of Social Media Usage.
- [3] Gupta, S. (2022). AI and Human Behavioral Changes.
- [4] Smith, A. (2020). Social Media and Human Interaction.
- [5] Kietzmann, J. et al. (2011). Social media? Business Horizons.
- [6] Kaplan, A. & Haenlein, M. (2010). Users of the world, unite!
- [7] Andreassen, C. (2015). Social Network Addiction.