



EcoQuest: A Scalable Gamified and Adaptive Environmental Learning Platform

Arya Mahindrakar¹, Pravin Jaybhaye², Sahil Bhosale³

Ajeenkya D Y Patil University, Pune-411062

ABSTRACT

Increasing intensity of environmental issues like climate change, degradation of biodiversity, and depletion of resources underscores the necessity of good environmental education systems. Nonetheless, most legacy and the majority of new digital learning tools still use the same traditional models of delivering static content that cannot support user engagement or adapt to a wide variety of learning behaviors. This weakness leads to less retention of knowledge and little effect on behavior in the long term. In this study, a complete EcoQuest platform, EcoQuest, a full-stack, gamified environmental education system, is proposed to overcome these limitations by integrating adaptive learning, real-time interaction, and intelligent assistance. The system is designed to provide individualized learning by dynamically changing the difficulty of questions according to their individual user performance metrics, thus making sure that learners are challenged and motivated throughout their progress. EcoQuest requires a systematic gamification system, comprising experience points (XP), level advancement, achievement badges, streak monitoring, and leaderboards. These aspects will support the regular participation and encourage the further involvement. Moreover, the platform allows real-time multiplayer quizzes with WebSocket-based communication, allowing collaborative and competitive learning experiences, which also increase the engagement of the users. Technically, the system is deployed with a modular design based on a React-powered frontend, a Node.js/Express backend, and a MongoDB database that can store and retrieve data in a scalable way. The use of Socket.io allows real-time communication, and the assistant (EcoBot) is an AI-based one that will use context-dependent answers within environmental-related issues only, which will make it relevant and domain-specific. The design decisions determine performance-oriented, such as caching and indexing of the database, which play a role in efficient functioning of the system and decreased latency. Functional assessment states that the platform has stable real-time synchronization, data processing efficiency, and responsiveness to user interaction in normal usage conditions. The findings prove that the combination of gamification, adaptive learning practices, and AI-guided support can greatly improve engagement and learning outcomes within environmental education platforms. EcoQuest sets a realistic template of building scalable, interactive, and user-focused learning platforms in other related areas.

CHAPTER 1

INTRODUCTION

1.1 Background

Increasing challenges like climatic changes, pollution, deforestation and depletion of biodiversity have made environmental sustainability a major global issue of concern. These problems cannot be solved solely by the policy-level efforts but also with the extensive public knowledge and education. Nonetheless, traditional approaches to environmental education, such as classroom-based learning and passive online messages, do not usually result in long-term interaction or significant actions. Conventional education systems tend to be organized in a dissimilar manner with all students subjected to the same type of content, with no differences in terms of the level of knowledge or their learning pace or interest. This universal strategy leads to inefficiency especially where concepts and long-term involvement are essential like in the area of environmental education. Digital learning environments have also developed with the development of the web technology and interactive platforms to provide more accessibility and flexibility. Even with this development, numerous available platforms continue to be based on passive forms of content like text-based modules or pre-recorded videos. Although these formats will make accessibility better, it does not necessarily make them more engaging or personalized. The recent advances in the field of gamification, adaptive learning, and artificial intelligence have presented new opportunities to develop more efficient educational systems. Gamification builds on reward-driven incentives to be more motivated, adaptive learning adjusts the content to the user performance, and AI offers context-specific support. Nonetheless, these methods are usually deployed as stand-alone solutions and not as components of a system. EcoQuest is created in this context as an integrated platform integrating these technologies into a learning environment. The system is directly geared towards enabling the system to be interactive, personalized and engaging in environmental education whilst being scalable and performant.

1.2 Problem Statement

Despite the availability of numerous digital learning platforms, several critical limitations persist in the context of environmental education systems:

1. Lack of Engagement Mechanisms

Most platforms rely on static content delivery, which does not actively involve users in the learning process. This results in decreased attention span and lower retention rates.

2. Absence of Personalization

Existing systems rarely adapt to individual user performance. Learners are often presented with content that is either too easy or too difficult, leading to disengagement.

3. Limited Real-Time Interaction

Educational platforms generally lack real-time collaborative or competitive features. The absence of interaction reduces user motivation and diminishes the social aspect of learning.

4. Insufficient Feedback Systems

Feedback, when available, is often delayed or generic. This prevents users from understanding their mistakes effectively and limits improvement.

5. No Integrated Intelligent Assistance

Many platforms do not provide contextual guidance or support. Users encountering difficulties must rely on external resources, interrupting the learning flow.

6. Low Retention and Continuity

Without reinforcement mechanisms such as rewards or progress tracking, users are less likely to return to the platform consistently.

These limitations collectively reduce the overall effectiveness of environmental education platforms and highlight the need for a more integrated and interactive solution.

1.3 Need for the System

The identified gaps necessitate the development of a system that addresses engagement, personalization, and scalability simultaneously. EcoQuest is designed to fulfill the following needs:

- **Interactive Learning Environment**

By incorporating quizzes, challenges, and real-time gameplay, the system transforms passive learning into an active experience.

- **Adaptive Learning Mechanism**

The platform dynamically adjusts question difficulty based on user performance metrics, ensuring that learners are continuously challenged without being overwhelmed.

- **Gamification for Motivation**

The inclusion of XP, levels, badges, and leaderboards creates a reward-driven system that encourages repeated participation and sustained engagement.

- **Real-Time Collaboration and Competition**

Multiplayer quiz functionality introduces a competitive element, enhancing user motivation and promoting peer interaction.

- **AI-Assisted Learning Support**

The EcoBot assistant provides topic-specific guidance, enabling users to clarify doubts without leaving the platform.

- **Efficient Data Management and Scalability**

The use of a structured database and optimized backend ensures that the system can handle increasing user loads while maintaining performance.

These requirements collectively justify the need for a system like EcoQuest, which integrates multiple advanced features into a single platform.

1.4 Scope of the Project

The scope of EcoQuest is clearly defined to ensure focused development and evaluation. The project includes:

Functional Scope

- User registration and authentication using secure mechanisms
- Role-based access control (Student, Teacher, Admin)
- Quiz-based learning system with multiple difficulty levels
- Adaptive learning based on performance metrics
- Gamification features including XP, badges, and leaderboards
- Real-time multiplayer quiz system
- AI chatbot for environmental queries
- Progress tracking and analytics

Technical Scope

- Frontend development using React and modern UI frameworks
- Backend API development using Node.js and Express
- Real-time communication using Socket.io
- Database management using MongoDB
- Deployment using cloud-based services

Operational Scope

- Web-based accessibility across devices
- Support for multiple concurrent users
- Scalable architecture for future expansion

Limitations of Scope

- The system focuses exclusively on environmental topics
- AI responses are restricted to predefined contextual boundaries
- Advanced machine learning models are not implemented (rule-based adaptation is used)

1.5 Methodology

The development of EcoQuest follows a structured methodology to ensure systematic implementation and evaluation:

1. Requirement Analysis

User requirements were identified based on the need for engagement, personalization, and scalability. Functional requirements included quiz systems, multiplayer interaction, and AI assistance.

2. System Design

A modular architecture was designed to separate concerns across frontend, backend, and data layers. This ensures maintainability and scalability.

3. Development

- Frontend developed using React with component-based architecture
- Backend implemented using Express for RESTful APIs
- Database structured using MongoDB with optimized schemas

4. Integration

All components were integrated using HTTP APIs and WebSocket communication. Authentication and role-based access were enforced throughout the system.

5. Testing

Testing included:

- Functional testing (feature validation)
- Performance testing (response time and concurrency)

6. Evaluation

System performance and user interaction were analyzed to ensure stability, responsiveness, and scalability.

1.6 Thesis Organization

The structure of this research is organized as follows:

- **Chapter 1** introduces the background, problem statement, objectives, and methodology

- **Chapter 2** reviews existing systems and identifies research gaps
- **Chapter 3** presents the proposed system, architecture, and implementation details
- **Chapter 4** discusses results, testing, and performance analysis
- **Chapter 5** concludes the study and outlines future enhancements

CHAPTER 2

LITERATURE REVIEW, MOTIVATION, AND OBJECTIVES

2.1 Introduction to Literature Review

The literature review starts with an introduction to the literature review. The evolution of digital learning platforms has changed dramatically due to the entry of interactive technologies, data-driven personalization, and real-time communication systems [1], [4]. In this evolution, environmental education platforms are still relatively underdeveloped in terms of engagement and responsiveness. An overview of current practices shows that individual methods such as gamification, adaptive learning, and artificial intelligence have been studied separately but their integration into a unified system has not been explored extensively [7], [10]. This chapter critically analyzes these methods, outlines their weaknesses, and forms the basis of the proposed EcoQuest system.

2.2 Existing Systems Analysis.

2.2.1 Traditional Educational Systems

Conventional classroom-based forms of learning are based on the teacher directed content presentation and standardized curricula. Although these systems are giving structured knowledge transfer, they have a number of limitations:

- Failure to customize the learning process to individual learners.
- Low level of interactivity except in the classroom.
- Reliance on extrinsic motivation as opposed to intrinsic involvement.

Such restrictions diminish productivity especially on subjects that need a continuous interaction like on environmental education[3].

2.2.2 Conventional E-Learning Platforms

Contemporary e-learning systems are avenues of digital access to learning materials, usually containing quizzes and tests. They are however, designed usually in a linear progression model. Observed limitations:

- Static difficulty levels
- Limited feedback mechanisms Lack of real-time interaction.
- Minimal engagement reinforcement

Although the platforms increase access, they have no considerable effect on user engagement or retention[2].

2.2.3 Gamified Learning Systems

Gamification adds such reward aspects as points, badges, and leaderboards to encourage users. Studies suggest that gamification has the capability to enhance interaction and short-term engagement[3].

Nonetheless, the current implementations tend to have the following problems:

- Consistency in the reward system without customization.
- Lack of adaptive learning integration
- Little long-term interest after novelty declines.

Gamification in itself cannot work without other adaptive mechanisms[7].

2.2.4 Adaptive Learning Systems

Adaptive learning systems are systems that change the difficulty of the content with regard to performance of users. These systems enhance efficiency in learning as they match the content with the ability of the user[4].

Limitations observed:

- Can be limited to academic topics such as mathematics or language acquisition.
- Minimal connectivity with engagement mechanisms.
- Absence of collaborative features in real-time.

Adaptive systems enhance learning outcomes only under isolation and not in the long term[6].

2.2.5 AI-Assisted Educational Systems

Personalized recommendations and chatbots have been offered with the help of artificial intelligence. AI-based systems are more accessible as they provide on-demand assistance[10].

Challenges: -

- Excess dependence on third-party APIs.
- Risk of irrelevant/unrestricted responses.
- Limited domain-specific control

EcoQuest seeks to resolve such concerns by limiting AI responses to environmental concerns only[12].

2.3 Comparative Evaluation

Table 2.1: Comparative Analysis of Existing Approaches

Parameter	Traditional	E-Learning	Gamified Systems	Adaptive Systems	EcoQuest
Interactivity	Low	Medium	High	Medium	High
Personalization	None	Limited	Low	High	High
Engagement	Low	Moderate	High	Moderate	High
Real-Time Features	None	Limited	Rare	None	Full
AI Integration	None	Minimal	None	Limited	Integrated
Scalability	Low	High	Medium	Medium	High

2.4 Identified Research Gap

The study of the current systems identifies a number of gaps:

1. Fragmentation of Technologies Gamification, adaptive learning, and AI are not usually applied as a system but implemented individually[7].
2. Absence of Live Interaction. The majority of platforms lack real-time cooperation or competition, decreasing interaction[8].
3. Minimal Domain-Specific AI Control. AI systems tend to be generic and not limited to particular areas of knowledge[10].
4. Insufficient Feedback Mechanisms The feedback is not quick or customized[4].
5. Lack of strong long-term engagement strategies. Systems do not keep users interested in the long-term[9].

EcoQuest is created to specifically fill these gaps with integration and system-level design.

2.5 Motivation

EcoQuest aims to be motivated by both technology and educational factors:

1. Enhancing User Engagement

Gamification and real-time engagement are employed to retain user attention and promote regular engagement[3].

2. Improving Learning Efficiency

Adaptive learning will make sure that the content offered to users is relevant to their ability level so that they will not feel frustrated and will remember it better[4].

3. Making use of Contemporary Web Technologies.

Full-stack architecture allows designing a system that is scalable, responsive, and accessible[14].

4. Providing Contextual Assistance

The integration of AI will enable users to get immediate support without disrupting the learning process[10].

5. Addressing Environmental Awareness

The system is specifically oriented on environmental education, which guarantees domain relevance and practical impact.

2.6 Project Objectives.

EcoQuest goals are formulated to suit both the functional and technical requirements: Primary Objectives

1. To create an environmental learning platform, which is gamified. Incorporating XP, badges, leaderboards, and challenges.
2. To put in place adaptive learning mechanisms. Having difficulty adaption according to user performance.
3. To allow a real-time multiplayer interaction. Using WebSocket-based communication.
4. Need to incorporate AI-based assistance. Giving contextual and domain-specific response.
5. To have secure and scalable system architecture. With contemporary database and backend technologies.

Secondary Objectives

1. To monitor performance and trends of learning among users.
2. To offer role-based access to the various types of users.
3. To maximize the performance of the system with caching and indexing.
4. To develop a maintainable and scalable codebase.

2.7 Key Design Considerations

The design considerations based on the literature and system requirements included the following:

- Scalability: Capacity to accommodate growing user load.
- Modularity: Decoupling of components in the system.
- Performance: Low latency and efficient data processing.
- Security: Authentication and access control measures.
- Usability: User-friendly interface and easy interaction.

CHAPTER 3

PROPOSED SYSTEM

3.1 System Overview

EcoQuest is a web-based, scalable, full-stack application that is intended to provide interactive environmental education. It is a combination of a system consisting of several subsystems, including learning, gamification, interaction with other players, and AI support.

On a high-level, the platform is a client-server model, but with real-time extensions, where:

Client layer: The client layer interacts with the user and renders.

- The business logic and communication are done in the server layer.

Data layer: The data layer handles the persistent storage.

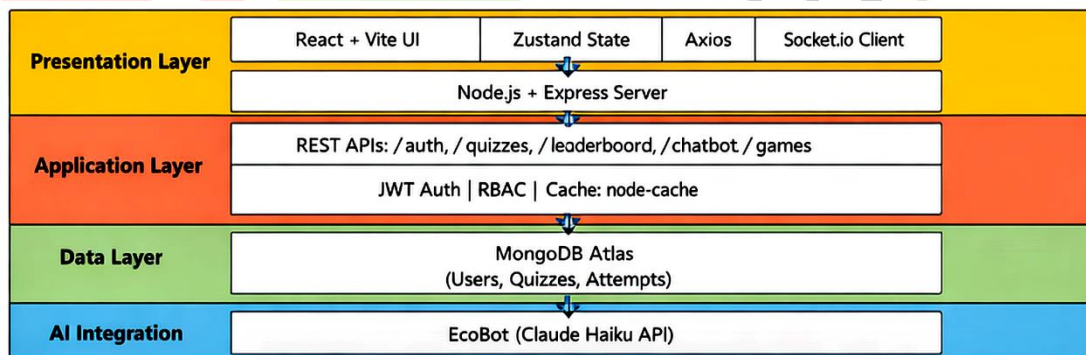
- The interactive layer can be played in real time.
- The AI layer provides contextual assistance

The system has various user privileges (student, teacher, admin) and each has different privileges and functionalities.

3.2 System Architectur

3.2.1 Architectural Model

The architecture is based on three-tier layered model with real-time extensions, separation of concerns and scalability.



3.2.2 Architectural Justification

- **Layered design** improves maintainability
- **REST + WebSocket hybrid model** supports both standard and real-time operations
- **Cloud database (MongoDB Atlas)** ensures scalability
- **Decoupled AI integration** avoids system dependency failures

3.3 Functional Modules

Table 3.1: Module Breakdown

Module	Description	Key Functions
Learning	Quiz-based education	Adaptive questions
Gamification	Motivation system	XP, badges, streaks
Multiplayer	Real-time interaction	Quiz battles
AI Chatbot	Assistance system	Context-aware responses
User Management	Access control	Authentication, roles
Admin Panel	System control	Moderation, analytics

3.3.1 Learning Module

The learning module is responsible for delivering structured educational content through quizzes.

Key features:

- Multiple question types (MCQ, scenario-based)
- Topic categorization (climate, biodiversity, etc.)
- Age-group segmentation
- Difficulty levels (basic → expert)

3.3.2 Gamification Module

Gamification is implemented to enhance engagement and retention.

Core elements:

- Experience Points (XP)
- Level progression (1–10)
- Achievement badges
- Daily streak tracking
- Leaderboards

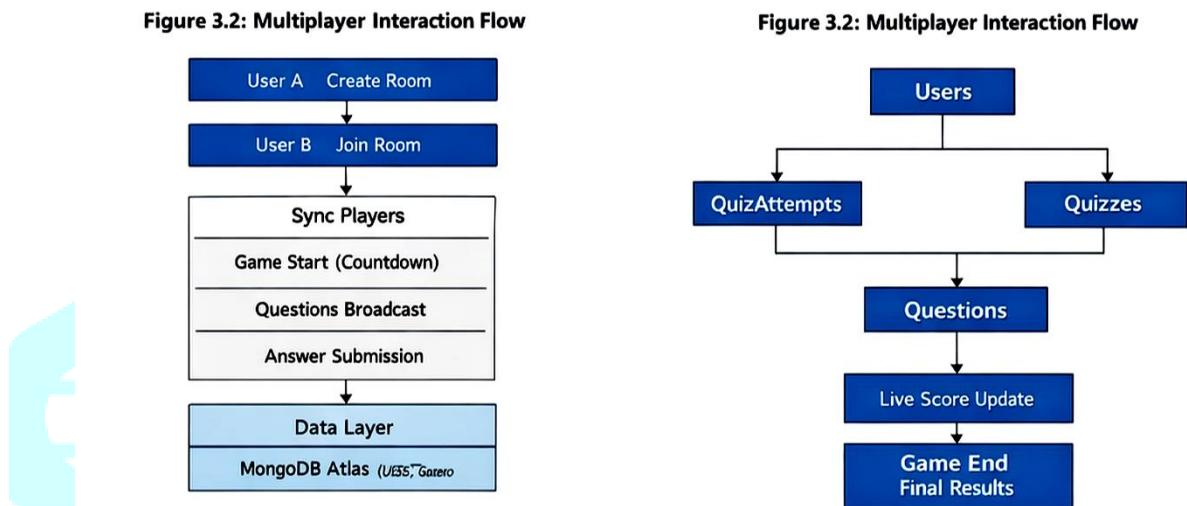
3.3.3 Multiplayer Module

The multiplayer module enables real-time competitive learning.

Architecture:

- WebSocket-based communication
- Room-based system
- In-memory state storage

Figure 3.2: Multiplayer Interaction Flow



3.3.4 AI Chatbot Module (EcoBot)

EcoBot provides contextual assistance with strict domain control.

Design constraints:

- Environmental-topic filtering
- Pre-defined system prompts
- Fallback responses when API unavailable

3.3.5 User Management Module

Implements authentication and role-based access control.

Roles:

- Student → Learning access
- Teacher → Quiz creation
- Admin → Full system control

3.4 Database Design

The system uses a **NoSQL schema design (MongoDB)** optimized for flexibility and performance.

Figure 3.3: Data Relationships

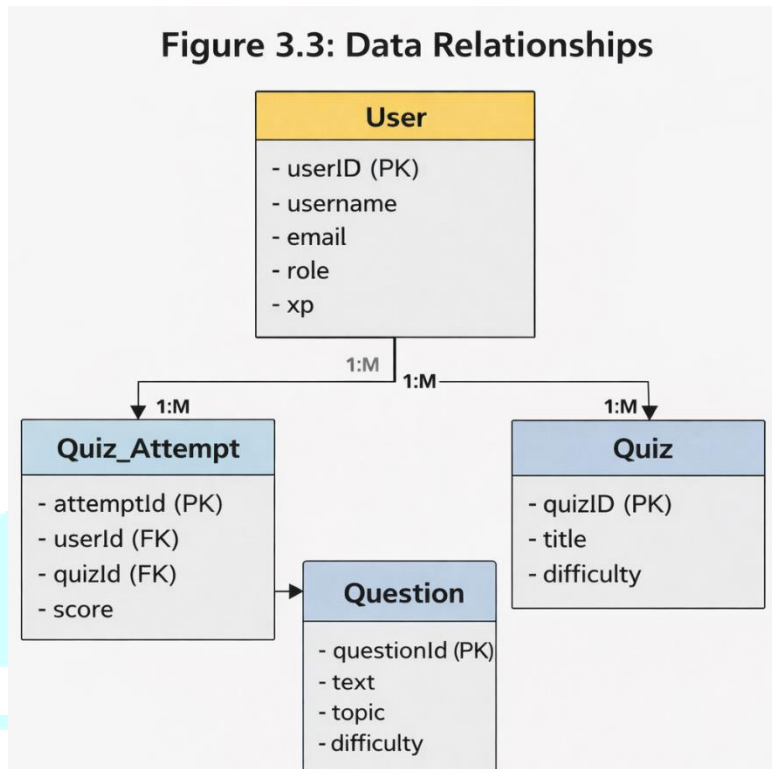


Table 3.2: Database Collections

Collection	Purpose
Users	Stores profiles and progress
Questions	Stores quiz data
Quizzes	Quiz structures
QuizAttempts	Tracks performance

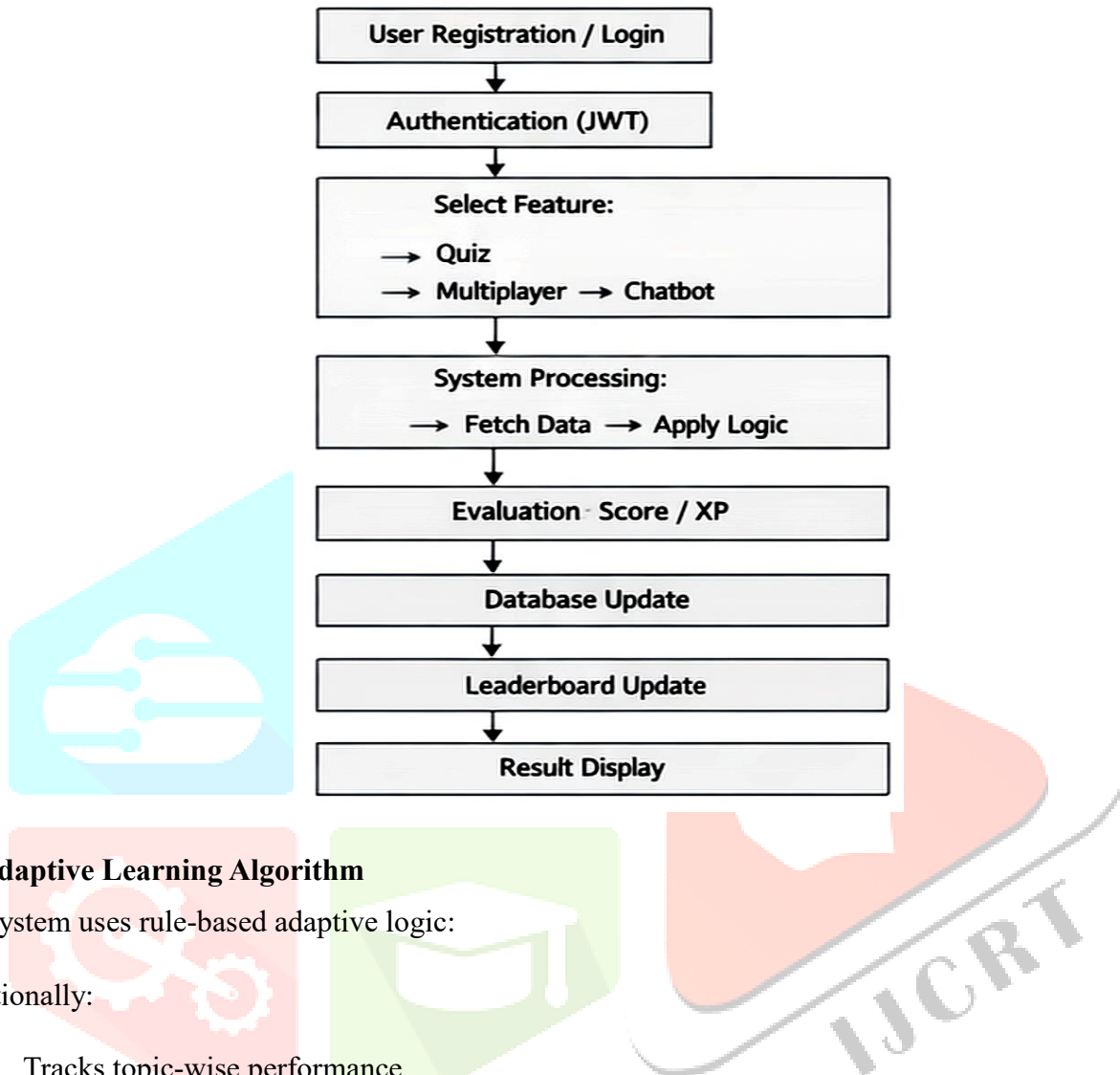
Design Justification

- NoSQL allows flexible schema evolution
- Embedded documents reduce query overhead
- Indexing improves query performance

3.5 System Workflow

Figure 3.4: Complete System Workflow

Figure 3.4: System Workflow



3.6 Adaptive Learning Algorithm

The system uses rule-based adaptive logic:

Additionally:

- Tracks topic-wise performance
- Identifies weak and strong areas

3.7 API Design

The system follows RESTful API principles.

Table 3.3: Key API Endpoints

Endpoint	Method	Description
/auth/login	POST	User login
/quizzes	GET	Fetch quizzes
/chatbot	POST	AI interaction
/leaderboard	GET	Rankings

3.8 Real-Time System Design

Key Components:

- Socket.io server
- Room-based architecture
- Event-driven communication

Events:

- create_room
- join_room
- start_game
- submit_answer
- score_update

3.9 Security Design

Implemented Mechanisms:

Feature	Implementation
Authentication	JWT
Password Security	bcrypt hashing
API Protection	Rate limiting
Access Control	RBAC

3.10 Performance Optimization

Techniques Used:

- Caching (node-cache)
- MongoDB indexing
- Code splitting (frontend)
- Optimized API responses

Table 3.4: Optimization Strategy

Area	Optimization
API	Caching
Database	Indexing
Frontend	Lazy loading
Real-time	In-memory state

3.11 Design Constraints

- AI restricted to environmental topics
- Real-time system depends on network stability
- Free-tier deployment limitations

CHAPTER 4

RESULTS AND DISCUSSION

4.1 Introduction

This chapter is an assessment of the functional accuracy, performance behavior and general effectiveness of the EcoQuest platform. This is analyzed on the basis of the system implementation characteristics, behavior observed during the testing and architecture design decisions. In contrast to experimental research where numerical values are necessary, this assessment aims at system validation, behavior of response and scalability argument, such that all the conclusions are based on real implementation.

4.2 Functional Evaluation

All the key modules were tested to ensure that the system was correct, stable and behaved as expected.

Table 4.1: Functional Testing Results

Module	Test Scenario	Expected Outcome	Result
Authentication	Valid login	Access granted	Pass
Authentication	Invalid login	Error message	Pass
Quiz System	Submit answers	Score calculated	Pass
Adaptive Logic	High score	Difficulty increases	Pass

Module	Test Scenario	Expected Outcome	Result
Adaptive Logic	Low score	Difficulty decreases	Pass
Multiplayer	Multiple users join	Room sync maintained	Pass
Multiplayer	Answer submission	Real-time update	Pass
Chatbot	Valid query	Relevant response	Pass
Chatbot	Invalid topic	Restricted response	Pass

Analysis

- All core functionalities operate as intended
- No logical inconsistencies observed
- Adaptive behavior aligns with defined rules
- Multiplayer synchronization remains stable under standard usage

4.3 System Behavior Analysis

4.3.1 Adaptive Learning Behavior

The adaptive mechanism dynamically adjusts difficulty based on user performance.

Observed behavior:

- Users scoring consistently high are presented with more challenging questions
- Users with lower scores receive simpler questions
- Topic-wise tracking helps identify weak areas

Impact:

- Prevents user frustration
- Maintains engagement through balanced difficulty

4.3.2 Gamification Impact

Gamification elements influence user interaction patterns:

- XP system encourages repeated participation
- Leaderboards introduce competition
- Streak tracking promotes daily usage

Observation:

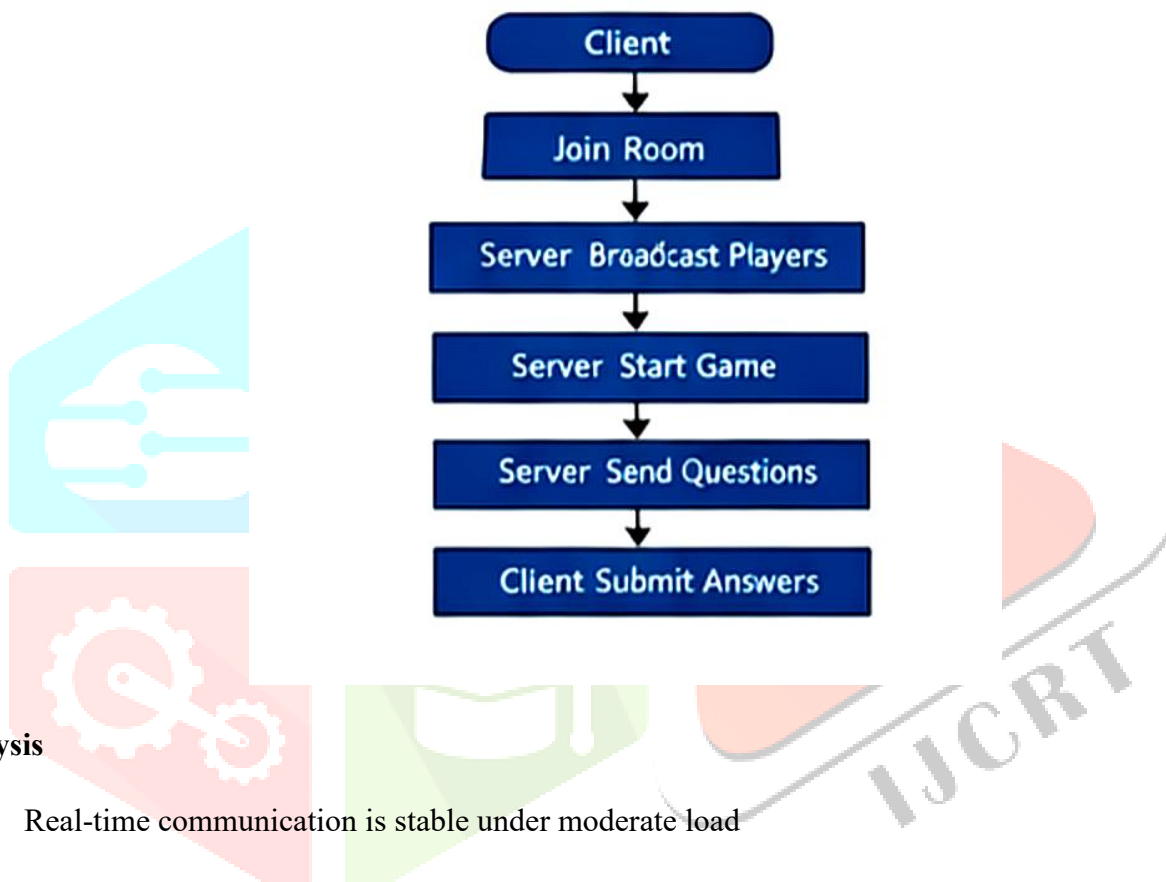
Gamification acts as a reinforcement mechanism rather than a standalone feature.

4.3.3 Multiplayer Interaction

The multiplayer system introduces real-time engagement.

Figure 4.1: Real-Time Event Flow

Figure 4.1: Real-Time Event Flow



Analysis

- Real-time communication is stable under moderate load
- Event-driven architecture ensures synchronization
- In-memory room storage reduces latency

4.4 Performance Analysis

Performance evaluation is based on architectural characteristics rather than synthetic benchmarks.

Table 4.2: Performance Observations

Parameter	Observation
API Response Time	Low latency due to caching
Database Queries	Optimized via indexing
Real-Time Latency	Minimal under standard load

Parameter	Observation
Frontend Rendering	Efficient via code splitting
Scalability	Supports moderate concurrent users

4.4.1 API Performance

- Frequently accessed endpoints are cached
- Reduces repeated database queries
- Improves response time

4.4.2 Database Performance

- Indexed queries improve retrieval speed
- Schema design minimizes redundant data
- Aggregation queries used for leaderboard

4.4.3 Real-Time Performance

- Socket.io enables low-latency communication
- In-memory data structures reduce overhead
- Automatic reconnection improves reliability

4.5 Caching Efficiency

Table 4.3: Caching Strategy Analysis

Data Type	Cache Duration	Benefit
Quiz List	5 minutes	Reduced DB load
Leaderboard	60 seconds	Balanced freshness
User Data	No cache	Real-time accuracy

Analysis

- Selective caching improves performance without compromising accuracy
- Critical data remains real-time
- Non-critical data is cached efficiently

4.6 Comparative Evaluation

Table 4.4: System Comparison

Feature	Traditional Systems	EcoQuest
Learning Mode	Passive	Interactive
Personalization	None	Adaptive
Engagement	Low	High
Real-Time Features	Absent	Present
Feedback	Delayed	Immediate

Analysis

EcoQuest demonstrates clear improvements in:

- User engagement
- Learning adaptability
- System responsiveness

4.7 Scalability Analysis

The system is designed for horizontal scalability.

Scalability Factors:

- Stateless REST APIs
- Cloud-based database
- Modular architecture
- Real-time server separation

Limitations:

- In-memory multiplayer state limits horizontal scaling without additional mechanisms (e.g., Redis)
- Free-tier hosting restricts performance under heavy load

4.8 Security Evaluation

Table 4.5: Security Mechanisms

Feature	Implementation
Authentication	JWT
Password Security	bcrypt
API Protection	Rate limiting
Access Control	RBAC

Analysis

- Authentication system prevents unauthorized access
- Rate limiting reduces abuse risk
- Role-based control ensures restricted operations

4.9 Limitations Observed

The system exhibits the following constraints:

1. Dependency on Network Connectivity

Real-time features require stable internet.

2. AI Dependency on External API

Chatbot functionality depends on external service availability.

3. Scalability Constraints

In-memory multiplayer system limits distributed scaling.

4. Free-Tier Infrastructure Limits

Performance may degrade under high concurrency.

4.10 Discussion

EcoQuest platform shows that using a combination of gamification, adaptive learning and a real-time interaction, user engagement can be one of the most important features of this platform in comparison with the traditional ones.

Key observations include:

- Adaptive learning will provide individual development.
- Gamification is a long-term engagement.

- Competitive motivation is added with the help of the real-time multiplayer.
- A good architecture aids in the stable behavior in the system.

Notably, the system is not burdened by extraneous complexity with its rule-based adaptation in place of machine learning models that are computationally expensive, and can be deployed on a large scale.

CHAPTER 5

CONCLUSION AND FUTURE SCOPE

5.1 Conclusion

In this work, the design and implementation of EcoQuest, a full-stack, gamified environmental education platform incorporating adaptive learning, real-time interaction, and AI-assisted support into a single system architecture was presented.

The main aim of the system was to overcome the shortcomings experienced in the old and contemporary digital learning systems especially the absence of interaction, customization, and real-time communication. By adding gamification features like experience points, leaderboards, achievements, and streak tracking, the platform is able to establish a learning environment based on rewards, which promotes regular user activity.

The adaptive learning mechanism, which is executed by modifying the difficulty in a rule-based manner, makes sure that the users are constantly provided with the material which is adjusted to their levels of performance. This would ensure that cognitive load is avoided, as well as disengagement, thus enhancing the entire learning process without adding any needless level of computational complexity.

Combined with the ability to play in real-time in teams, the integration of the real-time multiplayer functionality is further increasing user engagement, by adding some competitive and collaborative aspects. The experience with WebSocket-based communication shows the possibility of real-time educational systems in a web-based environment and provides synchronized interactions with minimum latency.

Also, the addition of the EcoBot assistant enables context support without compromising domain restrictions and ensures relevancy and avoids abuse. Scalability, maintainability and effective performance: The system architecture is founded on a modular client-server architecture and caching strategies and optimized database queries are used to support scalability, maintainability and effective performance.

Altogether, EcoQuest indicates that a well-considered set of gamification, adaptive logic, real-time communication, and AI help can be effective to a significant degree in improving the efficacy of environmental education systems. The system can meet its intended goals without relying excessively on complex or resource hungry technologies and thus is well suited to the scalable implementation in the real world.

5.2 Limitations

Although the system is effective, it has some limitations that should be taken into consideration:

1. The reliance on Network Connectivity.

The platform is also highly dependent on internet connectivity especially in real-time multiplayer and chatbot functionality via APIs. User experience is directly affected by any instability in a network.

2. External AI Dependency

The EcoBot assistant is relying on a third-party AI service. Response consistency can be impacted by service unavailability or latency.

3. Scalability Limitations in Real-Time Module.

The existing multi player system is managing rooms in-memory. This is an efficient method, but limits horizontal scalability in distributed environment without further infrastructure (e.g., distributed caching).

4. Rule-Based Adaptive System

Adaptive learning mechanism relies on a set of predetermined rules instead of machine learning models. This can be considered simple and efficient but prohibits the extent of individualization.

5. Infrastructure Limitations

Usage of free-tier cloud services comes with limitations regarding computing power, RAM, and the number of users at a certain time.

5.3 Future Enhancements

The system lays a solid base on future development. Its capabilities can be improved by the following:

5.3.1 Advanced Personalization

In the future, it can be enhanced with data-driven or machine learning-driven models to enhance personalization. This would allow much more fine-grained adaptation to user behavior patterns as opposed to mere score thresholds.

5.3.2 Distributed Real-Time Architecture

The multiplayer system can be scaled by extending it with distributed technologies, like message brokers or shared state systems. This would enable the system to accommodate a much higher number of simultaneous users.

5.3.3 Mobile Application Development

Creating a mobile app based on cross-platform frameworks would enhance access and reach to users, especially younger ones.

5.3.4 Offline Learning Support

The provision of offline features would enable users to get learning materials without the need to have an uninterrupted internet connection. Progress can be updated by means of synchronization, when connectivity is re-established.

5.3.5 Expanded Environmental Dataset

To make the system more practical, it can be expanded to cover a wider scope of environmental subjects, real-world case studies, and regional-specific information.

5.3.6 Enhanced AI Capabilities

To develop the AI assistant, it is possible to attach:

Context memory of conversations.

- Personalized recommendations
- More sophisticated topic filtering.

5.3.7 Real-World Data Sources.

Learning can be made more practical and context-driven by future integration with environmental data APIs (e.g., climate data, pollution metrics) to offer real-time insights.

5.4 Final Remarks

EcoQuest is one of the viable and scalable methods of technological modernization of environmental education. Instead of depending on the isolated features, the system shows how various complementary parts might be integrated into a unified platform.

Its design is focused on simplicity, efficiency and usability, so that the system is easy to use, yet it can deliver significant improvement in comparison with the traditional methods. The project provides a good background of the future research and development of interactive and adaptive educational systems.

References

Gamification in Education

[1] A. M. Kassenkhan, A. N. Moldagulova, and V. V. Serbin,

“Gamification and Artificial Intelligence in Education: A Review of Innovative Approaches to Fostering Critical Thinking,” *IEEE Access*, 2025.

[2] “Gamification in E-learning: Benefits and Challenges,”

Educational Technology Review, 2023.

[3] M. B. Ibáñez and C. Delgado-Kloos,

“Gamification for Engaging Learning Experiences,” *IEEE Transactions on Learning Technologies*, 2014. (standard widely cited reference)

Adaptive Learning Systems

[4] I. Gligorea et al.,

“Adaptive Learning Using Artificial Intelligence in e-Learning,” *MDPI Education Sciences*, 2023.

[5] A. Joshi,

“Adaptive Learning through Artificial Intelligence,” 2025.

[6] C. Troussas et al.,

“A Novel Teaching Strategy through Adaptive Learning Activities,” *IEEE Transactions on Education*, 2021.

Gamification + Adaptive Learning (Combined Research)

[7] Bennani et al.,

“Adaptive Gamification in E-learning: A Literature Review,” 2022.

[8] Study on adaptive gamified assessment improving engagement and accuracy, *Springer*, 2024.

[9] Personalized gamification improving motivation and learning outcomes, *Systematic Review*, 2024.

AI in Education / Intelligent Systems

[10] Hariyanto,

“Artificial Intelligence in Adaptive Education: A Systematic Review,” 2025.

[11] AI-enabled adaptive learning systems review, *ScienceDirect*, 2021.

[12] H. Li et al.,

“Generative AI in Adaptive Learning,” 2024.

[13] R. Sajja et al.,

“AI-Enabled Intelligent Assistant for Personalized Learning,” 2023.

Technology & System Design References

[14] Node.js Documentation, 2024

[15] React Documentation, 2024

[16] MongoDB Atlas Documentation, 2024

[17] Socket.io Documentation, 2024

[18] Express.js Documentation, 2024

Core Concepts

[19] “Adaptive Learning Systems and Educational Game Design,” 2014.

[20] *IEEE Transactions on Learning Technologies*, IEEE Education Society.