



Agro-homeopathy - Sustainable Gardening: Using Homeopathy To Treat Plant Ailments

“BEYOND PESTICIDES: EXPLORING THE BENEFITS OF AGROHOMEOPATHY”

Dr. G. Madhavi,¹ Dr. T. Rajeswari², Dr. T. Murali³

1. Professor & Hod, Department of Organon & Philosophy, Devs Homeopathic Medical College & Hospital, Hyderabad
2. Associate Professor & Hod, Department of Social & Preventive Medicine, Devs Homeopathic Medical College & Hospital, Hyderabad.
3. Professor & Hod, Department of Homeopathic Pharmacy, Devs Homeopathic Medical College & Hospital, Hyderabad

ABSTRACT: Agro-homeopathy is the expanding field of research that applies homeopathic principles to agriculture. It has demonstrated positive effects on plant growth and disease management in various instances.

Objective: This study aims to demonstrate the efficacy of homeopathic remedies in treating diseases of garden plants.

Materials and Methods: The experiment was conducted on garden plants, specifically betel nut (Areca catechu) and papaya (Carica papaya).

Conclusion: The findings suggest that agro-homeopathy could be a viable and promising alternative for managing plant diseases, ultimately supporting the improved growth of garden plants.

Keywords: Agro-homeopathy, agriculture, garden plants, homeopathic remedies, plant diseases.

INTRODUCTION:

India ranks in the second position in the world for agricultural output. According to the Indian Economic Survey for 2020–21, agriculture employs more than 50% of the workforce and contributes 20.2% to the country's GDP. Although the economic contribution of agriculture to India's GDP has been gradually declining due to the country's overall economic growth, it remains the largest demographic sector and plays a crucial role in the overall socio-economic framework of India¹.

Crop productivity has been increased in Indian agriculture due to the use of pesticides and fertilizers; however, their unregulated and excessive use has resulted in various ecosystem and serious health issues².

Numerous studies conducted between 2011 and 2020 have identified 45 different types of cancer among rural farm workers in India that can be linked to pesticide use. These chemicals have been shown to cause DNA damage, disrupt hormonal balance, and weaken the immune system. Occupational exposure of farmers and the consumption of pesticide-treated crops have been recognized as significant factors contributing to the development of cancer³.

The time has come to embrace sustainable farming practices that can effectively replace harmful pesticides in agriculture. This shift not only promotes environmental health but also paves the way for a more vibrant and resilient farming future.

NEED FOR AGRO HOMEOPATHY

"Agro-homeopathy Unveiled: The Path to Sustainable Agriculture"

Agro-homeopathy is an emerging and legitimate field of research that applies homeopathic principles to agriculture. The history of agro homeopathy spans approximately 100 years. It was first used in 1923 by Kolisko for the germination of wheat. Subsequently, in 1928, further research was conducted to evaluate the effectiveness of high dilutions on microorganisms. These two studies led to the establishment of agro homeopathy, which inspired further research⁴.

Dutch homeopath V.D. Kaviraj, who pioneered in agrohomoepathy, cured a sick apple tree using Belladonna⁵. Then his great success came with Helix Tosta, which kept snails out of the garden. Next was the discovery of Silicea and its remarkable potential as a biodynamic fruit enhancer. Dr. Boenninghausen initially noticed that the extra medications he placed into his garden plants after treating patients were showing effects.⁵

Plants endure a myriad of challenges, battling diseases brought on by bacteria, viruses, fungal infections, pests, and nutritional deficiencies that threaten their vitality. Agro-homeopathy addresses plant diseases and stress conditions by utilizing ultra-diluted homeopathic solutions. It offers a plant-friendly pharmacy to address these problems without harmful residues or toxic effects.

EXPERIMENTAL AND FIELD OBSERVATIONS:

These studies suggest that Agro-homeopathy may improve seed germination, root development, flowering, crop yield, and overall resilience.

1. A study showed the effect of homeopathic treatment on tobacco plants subjected to tobacco mosaic virus (TMV). Homeopathic treatments of Arsenic increased resistance to TMV in tobacco plants.⁶
2. Homeopathy and dynamized high dilutions (DHDs) have shown promising results in plant-based research, especially in the area of plant bio-stimulation. A study highlighted the potential of dynamized high dilutions as effective plant bio-stimulators and emphasised the contribution of homeopathy to reducing pesticide use in strawberry cropping systems⁷.
3. It strengthens plants from the inside out, helping them resist diseases and pests by absorbing various nutrients. Silica strengthens plant tissue, while Calcarea carbonica hardens and stabilises plant structure. Natrum muriaticum regulates water metabolism in plants, and Helix tosta is used against pests such as snails and slugs.
4. A study showed the effectiveness of agro-homeopathic treatments, specifically fitonosodes, in combating clubroot disease caused by Plasmodiophora brassicae in cauliflower and cabbage. The findings suggest that agro-homeopathy, the use of fitonosodes, could serve as an effective and promising alternative for controlling P. brassicae, thereby contributing to improved physiological and structural development of the crops⁹.
5. A study demonstrated the antifungal activity of homeopathic medicines against the Alternaria solani pathogen affecting the Solanum lycopersicum plant, as shown in an in vitro study and on-farm trial¹⁰.

Homeopathic remedies for the treatment of specific plant diseases⁵:

1. Remedies for nutritional deficiencies

- Calcarea Carbonica, Calcarea Fluorica, Calcarea Phosphorica, Ferrum Phosphoricum
- Ferrum Sulphuricum, Kalium Phosphoricum, Kalium Sulphuricum, Magnesium Phosphoricum

2. Remedies for Aphids and Scale Insects

- Coccinella septempunctata, Coccus cacti

3. Remedies for Mites

- Bovista, Ricinus communis, Trombidium muscae domesticae

4. Remedies for Snails and Slugs

- Helix tosta, Rumina decollata
- Hyposmocoma molluscivora, Absinthium

5. Bacterial diseases: Nat-sal., Sal-ac.**6. Fungal diseases:** Berb., Bov., Carb-v., Equis., Sil.**7. Viral diseases:** Acon., Am., Bell., Canth., Nat-sal., Salac.**8. fruits fall early:** Bell., Calc., Sil., Vib.**9. Potato virus:** Nat-sal., Sal-ac.**10. Pests infestation:** Aphids: All-c., Am-c., Chrysop., Cocc-s., Menth., Nat-c.,

- Nat-sal., Nat-s., Oci-b., Phos., Sal-ac., Salv., Samb., Sil., Syrph., Trop.,

11. Bugs: Aran., Canth., Ferr-m., Hyssop., Kali-c., Kali-perm., Oci-b., Sat-h., Sulph., Thuj., Trop.**12. Moths:** Aran., Bomb-pr., Camph., Hyssop., Menth., Oci-b., Ric., Salv., Samb., Sat-h.,

- Sil., Sulph., Tanac., Teucr., Thuj., Valer., Vib.

CASE STUDIES ON GARDEN PLANTS:**CASE 1:**

Plant disease: The betel nut plant (*Areca catechu*) was affected by mealybug infestation, causing damage to its leaves and leading to leaf drop. (Figure A)

Treatment: *Coccus cacti* 30C was given, which is specific for bug infestation.

Mode of application: *Coccus cacti* 30, 5 pills were dissolved in 100ml of water and watered the plant.

Result: After 15 days, it was observed that the damaged leaves had fallen and new, healthy leaves appeared without any bug infestation. (Figure B)

CASE 2:

Plant disease: In the papaya plant (*Carica papaya*), premature fruit drop was observed without growth or ripening. Nutritional deficiencies, especially calcium, cause early fruit drop. (Figure A)

Treatment: *Calcarea phosphoricum* 30C was given.

Mode of application: *Calcarea Phos* 30C, 5 pills was dissolved in 100 ml of water.

Result: After 1 month, fruit falling was significantly reduced. (Figure B).

SELECTION OF REMEDY:

Remedies should be selected based on symptom similarity. Knowledge of plant diseases and their symptoms is essential for remedy selection. Today, literature on agro-homeopathy is widely available, aiding in the choice of appropriate remedies.

SELECTION OF POTENCY:

Choosing the right potency of the drug is also very important to treat plant diseases. It was previously believed that the plant model is much simpler than the human model, so lower potencies of drugs should be used to treat plants¹¹. Pioneer of agro-homeopathy, V.D. Kaviraj also preferred lower potencies like 6x and 30x of drugs⁵. But recent studies show that higher potencies of drugs can also perform well and sometimes work better than their lower potencies¹¹. So, the selection of a drug's potency is drug-specific and may also be case-specific.

MODE OF ADMINISTRATION:

Drugs should be diluted in water and mixed properly before use. They can be diluted with water at various ratios: 1:100, 1:200, 1:500, 1:1000, 1:5000, etc. It has been reported that at higher dilutions, the effect of the vehicle (alcohol) is absent¹¹.

PRECAUTIONS:

Do not mix homeopathic medicine with anything other than water. Avoid using commercial herbicides, pesticides, fungicides, or fertilisers for at least 10 days after applying homeopathic remedies, as this may cancel out the positive effects⁵. Water that is too acidic or alkaline can affect the remedy's action, usually just slowing it down. Ensure your spraying equipment is not contaminated; residues of agricultural chemicals may neutralize the remedy. If unsure, rinse thoroughly with the hottest water possible or steam clean⁵.

DISCUSSION:

Hahnemann, in the Organon¹², 32nd aphorism, states that homeopathic remedies act at all times, under all circumstances, on every living being, thus making homeopathy effective in curing plant diseases.

Ultra-high dilutions of homeopathic medicines can be safely used for various purposes, including seed germination, improving soil health, enhancing seedling growth, promoting flowering and fruiting, and providing protection against diseases and environmental stresses. Proper selection of remedies, potency, and mode of application is important for achieving effective results. Higher dilutions of drugs (1:500 or 1:1000) with water are more effective for plants.¹³

In the first case of the betel nut plant, diagnosing the plant disease is essential for choosing the right remedy, such as *Coccus cacti*. In the second Case of the carica papaya plant, it is observed that nutritional deficiencies caused premature fruit drop, which was corrected using *Calcarea phos*. In these two cases, 30C potency was chosen and administered with water.

CONCLUSION:

Agro Homoeopathy is an eco-friendly and cost-effective approach that enhances plant health and minimises chemical use in agriculture. Despite being limited by insufficient research and awareness, it shows significant potential when integrated with organic practices to promote sustainable farming. Agriculture free from pesticides is the global target; the troublesome effects of chemical fertilizers cannot be ignored. Future research may strengthen the efficacy of homeopathy in agriculture.

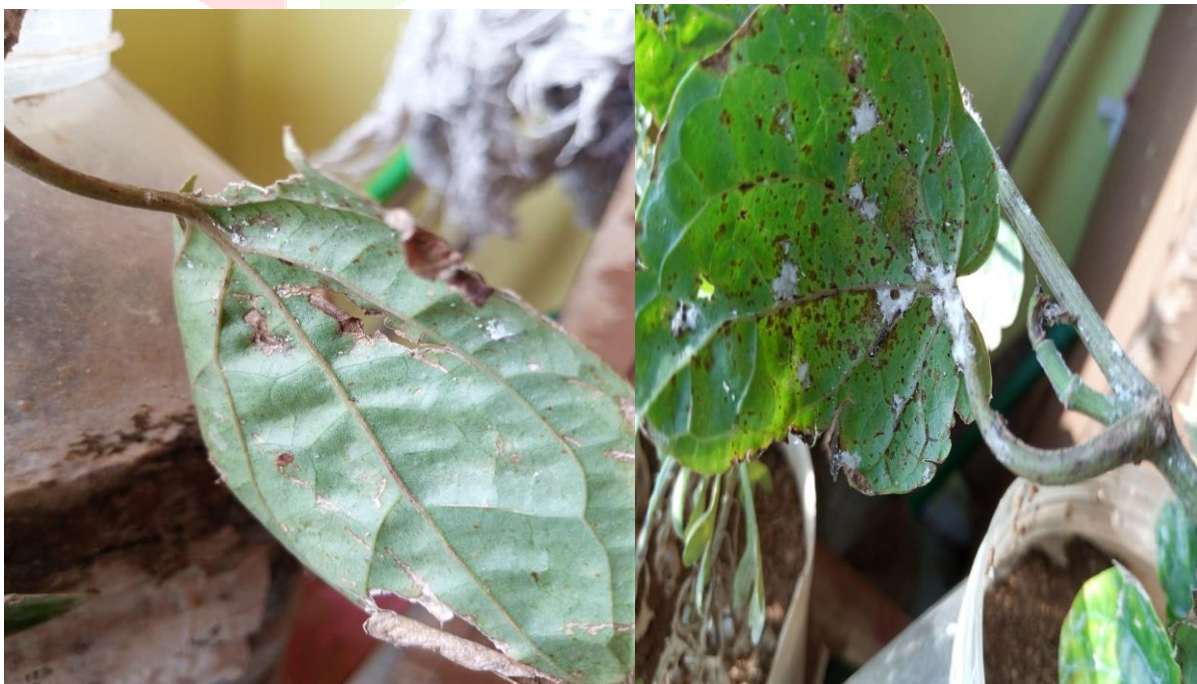
CASE 1:

FIGURE A: Bug infestation of the betel nut plant



FIGURE B: After giving coccus cacti

CASE 2:



Fruits that fell early



fruits became dry and black

FIGURE A: Calcium deficiency of *Carica papaya*



Figure B: after giving calcarea phos

REFERENCES:

1. "India economic survey 2018: Farmers gain as agriculture mechanisation speeds up, but more R&D needed". The Financial Express. 29 January 2018. Archived from the original on 8 January 2019. Retrieved 8 January 2019.
2. Vaidyanathan, A. Fertilizers use in Indian agriculture. *J. Soc. Econ. Dev.* 24 (Suppl 1), 6–21 (2022).
3. Bhakar, A., Singh, Y.V., Abhishek et al. Pesticides in India in the twenty-first century and their impact on biodiversity. *Vegetos* 36, 768–778 (2023).
4. A Review Article On "Agro homeopathy: Integrating Homeopathy into Agriculture" by Dr Kalpak. K. Zala, *IJRAR*, June 2024, Volume 11, Issue 2.
5. Vaikuntanath Das Kaviraj, *Homeopathy for farm and Garden*, 2015, 4th edition, Narayana Verlag publisher.
6. Betti L, Lazzarato L, Trebbi G, et al. Effects of homeopathic arsenic on tobacco plant resistance to tobacco mosaic virus. Theoretical suggestions about system variability, based on a large experimental data set. *Homeopathy*. 2003;92(4):195-202.
7. Faedo, Leonardo; Verdi, Rovier; Rayns, Francis; Kretschmar, Aike; Wright, Julia; Boff, Pedro: The Use of Homeopathy in Agriculture and Its Plant Bio-stimulation Effect on the Strawberry Cropping System. *Homeopathy*; Issue 01, 2024.
8. Dhalayatar PH, Reddy KSP, Kotenavar RS, Hooli AV. Agro homeopathy: a green approach to sustainable farming. *International Journal of Homeopathic Sciences*. 2025;9(3):1365-136.
9. Rodríguez-García, Daniela & Chavarría-Vega, Marena & Vargas-Rojas, Jorge. (2025). Agro-homeopathy as an alternative for the control of *Plasmodiophora brassicae* in Brassicaceae under greenhouse conditions. *Agronomía Costarricense*. 10.15517/mpk3jk32.
10. Arul, Vettrivel. (2024). Agro-homeopathy: A Paradigm Shift in Sustainable Cultivation for Enhanced Medicinal Plant Productivity and Secondary Metabolite Production.
11. Sushobhan Sen, Indrani Chandra, Mst Arjina Khatun, Sabyasachi Chatterjee, and Sumanta Das. *Agro-homeopathy: An Emerging Field of Agriculture for Higher Crop Productivity and Protection of Plants Against Various Stress Conditions*. *Ijrar*, 2008: vol5, issue4
12. Hahnemann, S. (2013). *Organon of Medicine* 5th and 6th Edition. B. Jain Publishers.
13. Surekha T, Maniprasad G. *Agrohomoepathy: bridging nature and agriculture for sustainable crop health*. *Gal Int J Health Sci Res*. 2023; 8(3): 6-11.