



Design And Development Of Women's Wear Collection For Upcoming Season

Ms.Soniya B

Student

Department of fashion technology

Bannari Amman Institute Of Technology

Tamilnadu, India.

Ms.Boomika R

Student

Department of fashion technology

Bannari Amman Institute Of Technology

Tamilnadu, India.

Ms.Rashlini R

Student

Department of fashion technology

Bannari Amman Institute Of Technology

Tamilnadu, India.

Mr.Siranjivi C

Student

Department of fashion technology

Bannari Amman Institute Of Technology

Tamilnadu, India.

Mr.Mohan Bharathi C

Assistant Professor

Department of fashion technology

Bannari Amman Institute Of Technology

Tamilnadu, India.

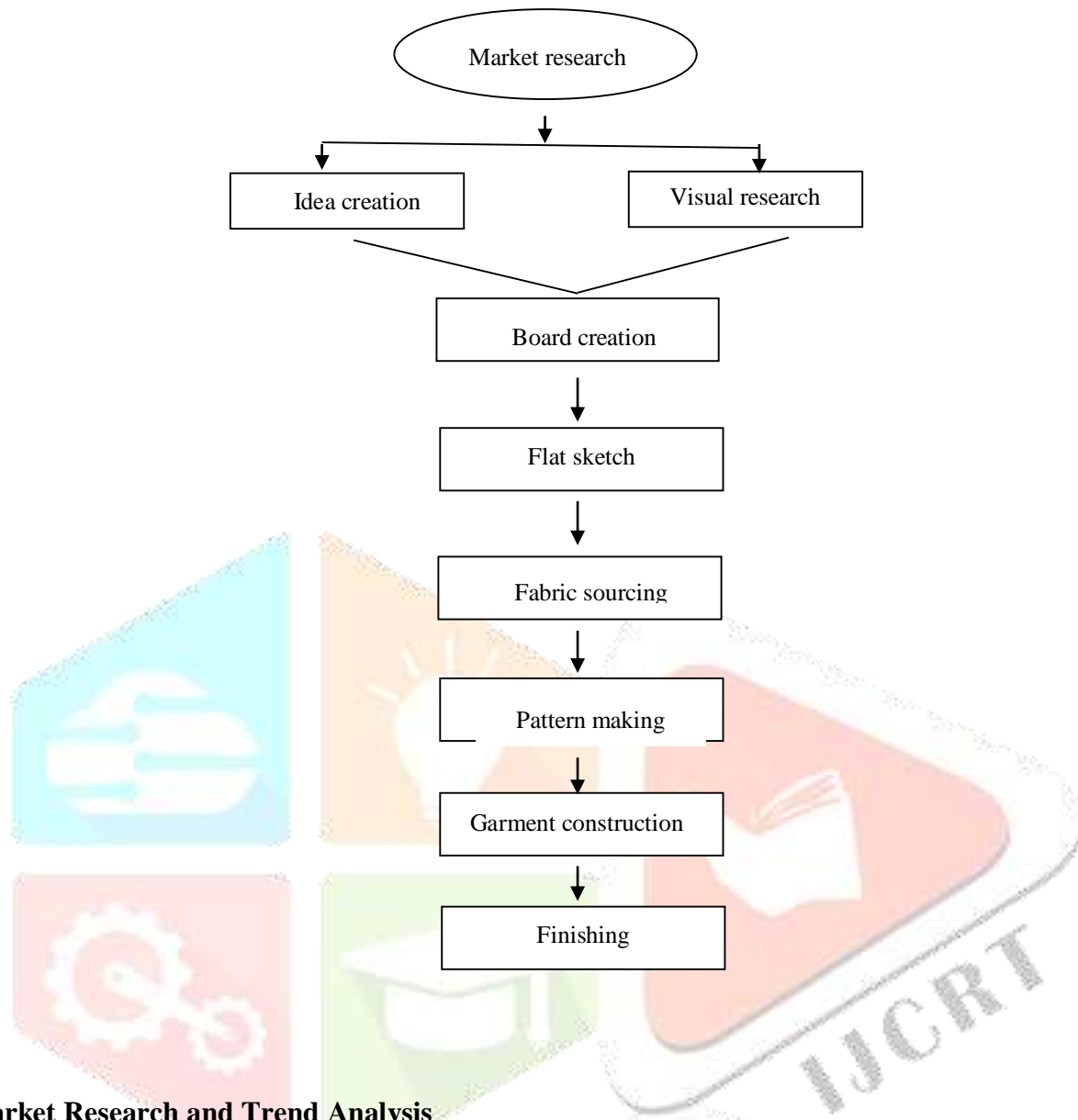
Abstract: This research explores the design and development of women's wear collection for upcoming season (Spring/Summer 2025). This theme is influenced by blend of human connection and nature. The collection aims to offer minimalistic design and conscious approach for a way of dressing. It explores flowy silhouettes, casual fit and plain textures through symmetrical cuts to create a wardrobe that is sophisticated and effortlessly chic.

Keywords – Human connection, minimalistic, flowy silhouette, style, wardrobe.

I. INTRODUCTION:-

This season inspired by harmonizing human nature with self-expression, the collection aims to create a wardrobe that is both sophisticated and effortlessly chic. The core concept revolves around the exploration of flowy silhouettes, casual fits, and minimalist aesthetics, accentuated by symmetrical cuts and natural fabrics like cotton and linen. A comprehensive analysis of the design process, from initial inspiration to final garment development, is provided. The paper explores the importance of color palette, fabric selection, print development, and silhouette creation in achieving the collection's desired aesthetic. The collection incorporates botanical prints to celebrate nature's beauty while maintaining a conscious approach to design. A comprehensive analysis of target market, trend forecasting, and material selection was conducted to inform the design process. The resulting collection offers a versatile range of garments, including formal wear, casual wear, and beachwear, catering to the modern woman's diverse lifestyle. Through a meticulous attention to detail and a commitment to comfort, the collection strives to evoke a sense of tranquility and empowerment.

II. METHODOLOGY AND IMPLEMENTATION:-



1. Market Research and Trend Analysis

- Analyze current and upcoming fashion trends for Spring/Summer 25.
 - **Fashion Forecasting Reports:** Subscribe to industry reports from organizations like WGSN, Trendalytics, or Euromonitor.
 - **Social Media Platforms:** Analyze popular fashion influencers and hashtags to identify emerging trends.
- Identify key trends (e.g. material selection, color palette, silhouette type).
 - **Relaxed silhouettes:** Loose-fitting clothing and comfortable fabrics remain in demand.
 - **Nostalgic prints and patterns:** Incorporate retro-inspired prints like florals, geometrics, and tie-dye.
 - **Vibrant hues:** Experiment with bright and saturated colors.



2. Design Concept Development

□ Create design concepts that incorporate for various occasions.

Formal Wear

Theme: Timeless Elegance with a Modern Twist

- **Silhouettes:** Classic A-line dresses, tailored skirts.
- **Fabrics:** Natural fabrics like cotton and linen.
- **Colors:** Olive green with pops of black shade.

Casual Wear

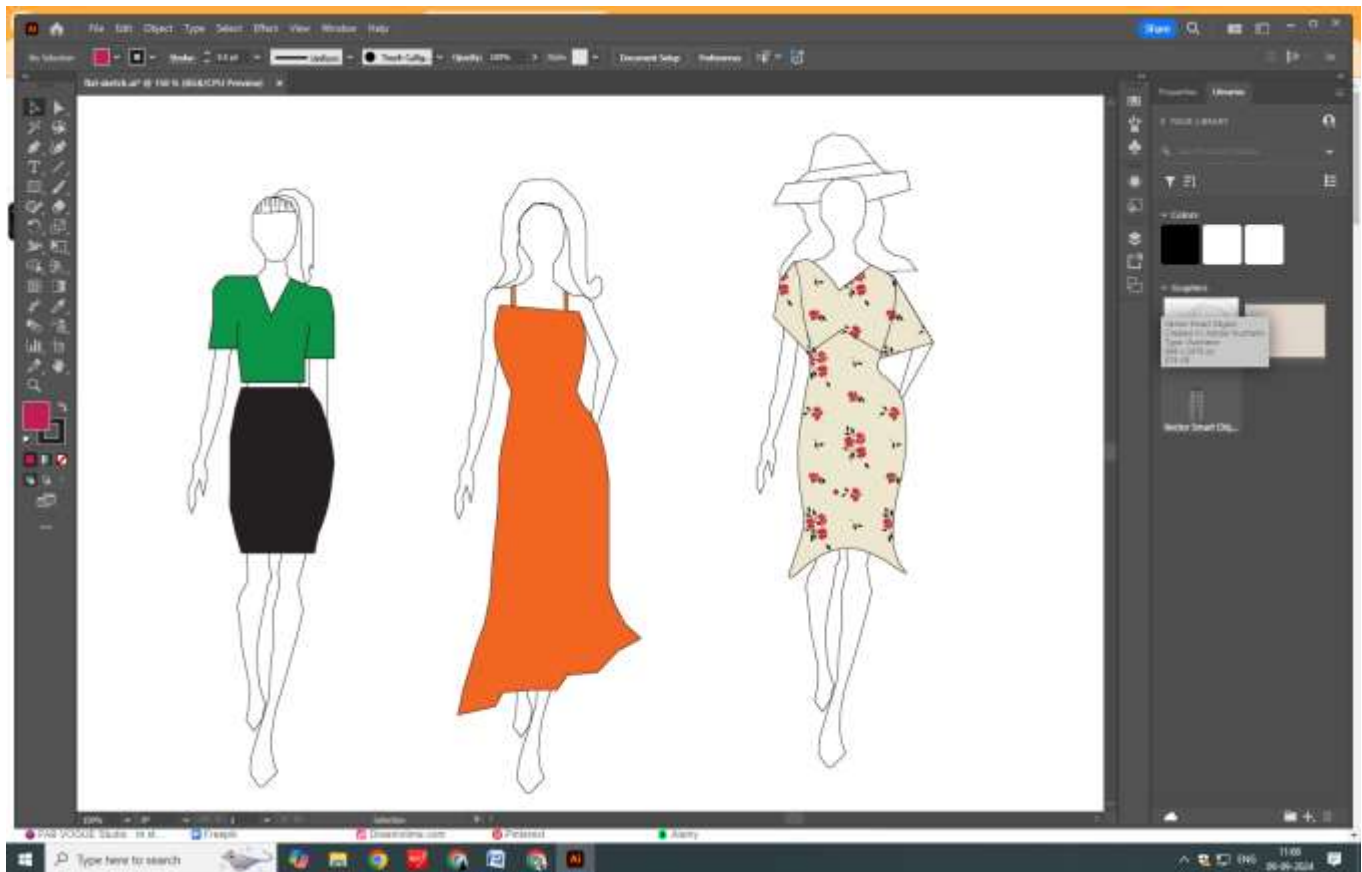
Theme: Effortless Chic with A-Line Vibe

- **Silhouettes:** Flowy dress with plain texture.
- **Fabrics:** Luxurious fabric like silk..
- **Colors:** Earthy tones and vibrant hues.

Beachwear

Theme: Sun-Kissed Sophistication

- **Silhouettes:** Beach wear with midriff yoke cuts and playful details.
- **Fabrics:** Quick-drying fabrics like rayon.
- **Colors:** Pastel tones and white shade.
- **Print:** Elegance with nature of botanical prints.

Result:**3. Pattern making process:****1. Formal Wear: Top and Skirt**

Top Pattern: Create a bodice pattern by drafting from the block.
Add desired neckline, sleeve, and shoulder details.
Consider adding darts or pleats for shaping and fit.

Skirt Pattern: Create a skirt pattern based on the desired silhouette (e.g., pencil).
Add details like zipper.
Ensure the skirt length and waistline match the top.

2. Casual Wear: A-Line Gown

Gown Pattern: Draft a bodice pattern from the block, considering the desired neckline and strap length.

Create an A-line gown pattern, adjusting the flare and length.
Consider adding darts or pleats for shaping and fit.

3. Beachwear: Midriff Yoke Dress

Dress Pattern: Create a bodice pattern with a fitted bodice and a midriff cutout.
Design a skirt pattern with a desired length and fullness.
Combine the bodice and skirt patterns, ensuring a smooth transition at the waist.

4. Garment Construction process:

- Carefully cut the fabric pieces according to the traced pattern.
- Use a sharp rotary cutter or scissors for precise cuts.
- Assemble the fabric pieces using appropriate stitches and techniques.
- Common stitches include straight stitch, zigzag stitch, over lock stitch, and flat lock stitch.
- Use a sewing machine depending on the garment and desired finish.
- Hem the garment to create a clean and finished look.
- Try on the garment to ensure proper fit and make any necessary adjustments.
- Alterations may include taking in or letting out seams, adjusting the length, or adding darts or pleats.

III. CONCLUSION:-

The design and development of the SS25 women's wear collection successfully captured the essence of contemporary fashion trends while incorporating unique elements. The collection's emphasis on comfort, and versatility resonated with the target audience. By carefully considering market research and consumer insights, we created a cohesive and appealing collection. The use of natural fabrics, bold patterns, and timeless silhouettes ensured that the garments were both stylish and functional. The collection's ability to adapt to various occasions and personal styles demonstrated its versatility and appeal. Overall, the SS25 women's wear collection successfully combined fashion and function offering a fresh and exciting wardrobe option for modern women.

IV. REFERENCES:-

- [1] <https://www.wgsn.com/en>
- [2] <https://fashionmagazine.com/>
- [3] <https://www.vogue.com/>
- [4] <https://www.trendalytics.co/>
- [5] <https://www.modemonline.com/fashion/fashion-weeks/spring-summer-2025/new-york/women/events>
- [6] <https://www.vogue.com/fashion-shows/spring-2025-ready-to-wear>